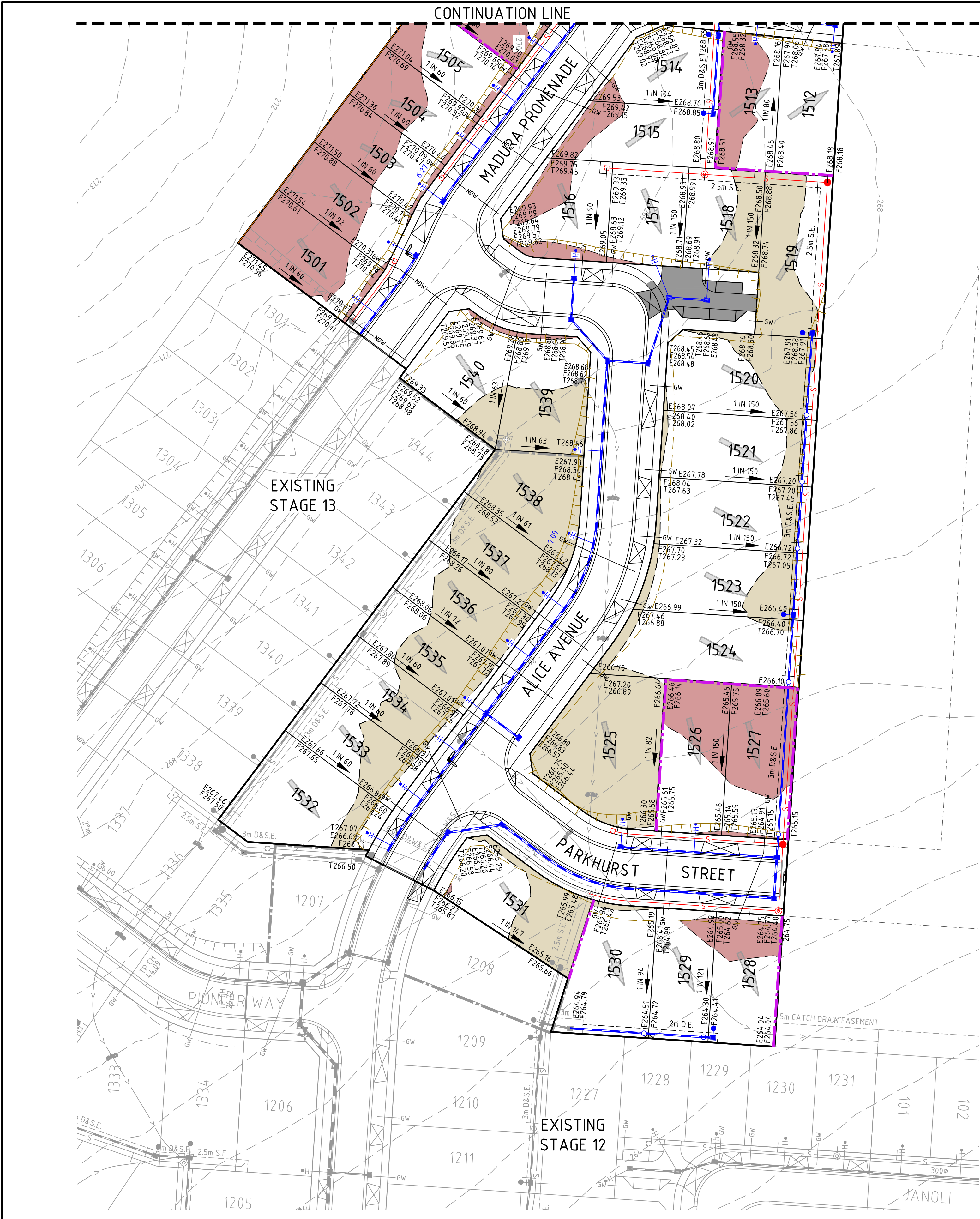


file name: 304018C\_Sales Plan - L6.dwg, layout name: C01, plotted by: Kieran Ayres  
file location: G:\304018C\DWG\ALC01.dwg, plot date: 31/08/2021 12:21 PM, Sheet: 1 of 1, Sheets

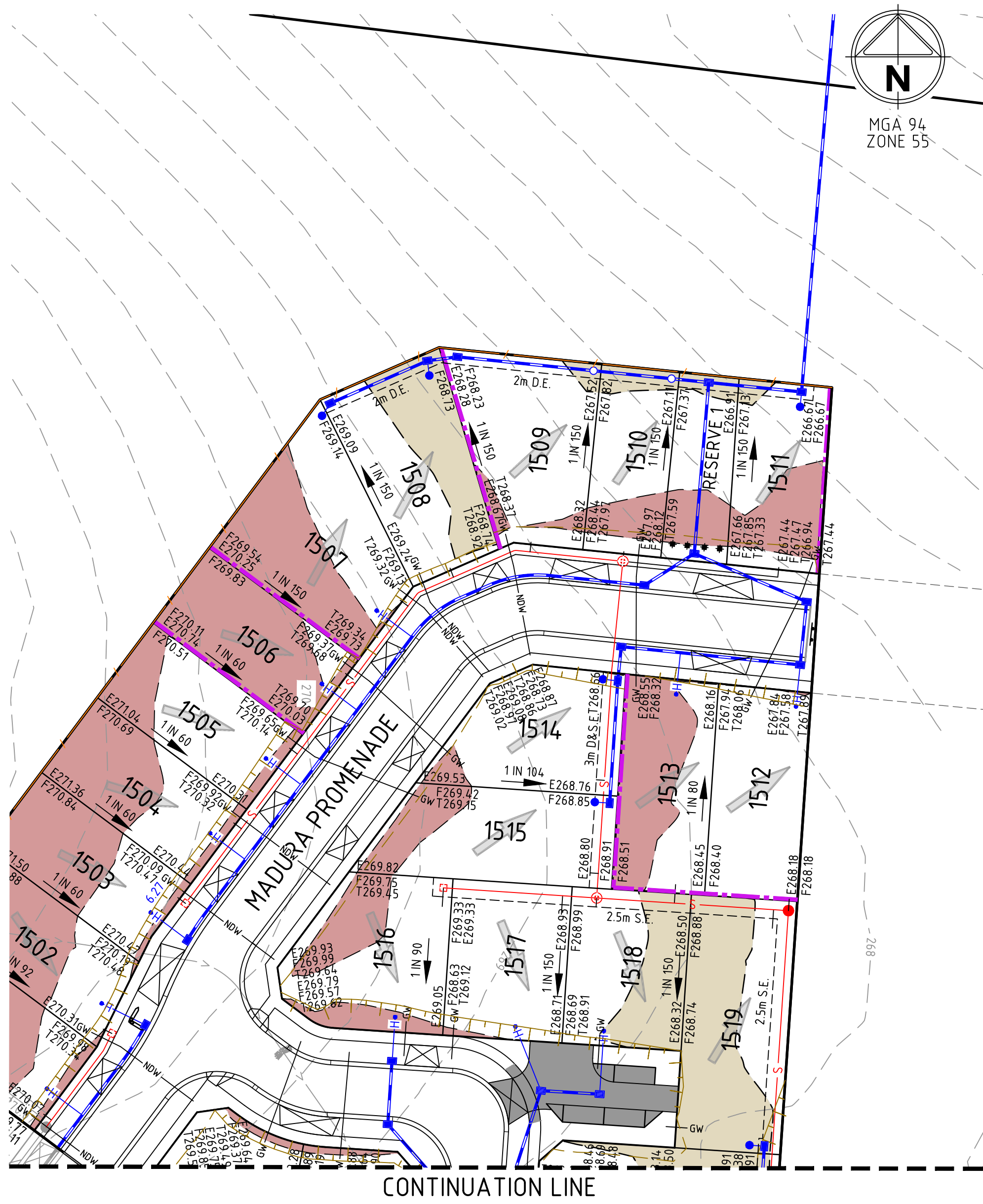
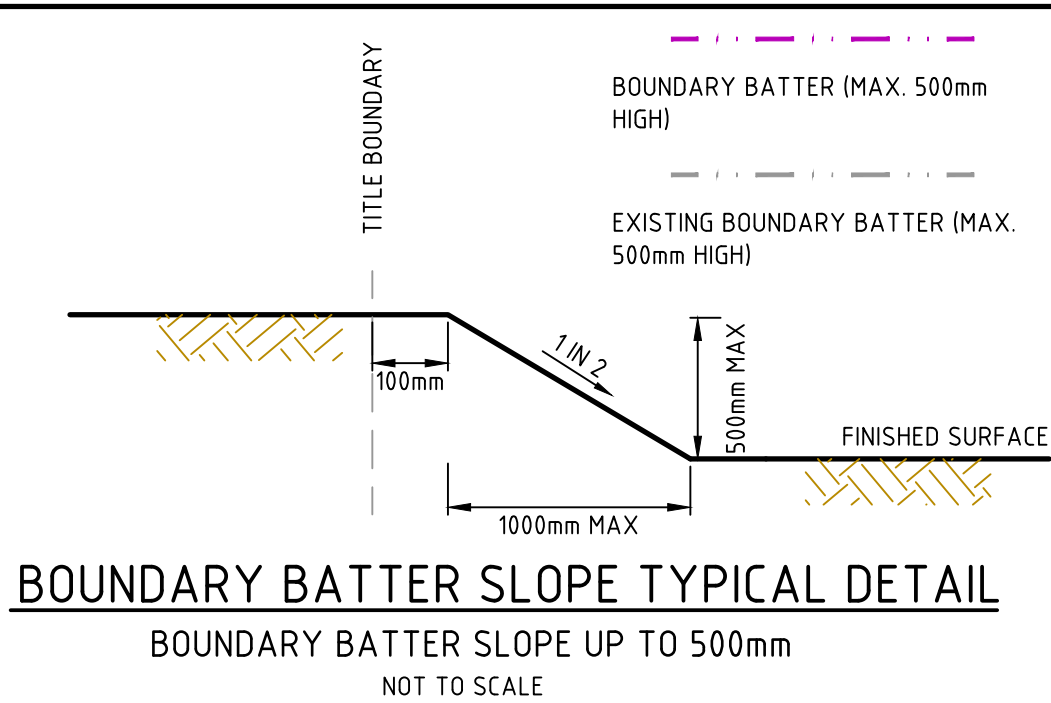


**LEGEND**

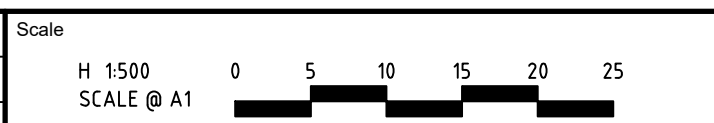
EXCAVATION GREATER THAN 0.20m		EXISTING SURFACE LEVEL	E123.45
FILLING GREATER THAN 0.20m		FINISHED SURFACE LEVEL	F124.68
BATTER		BATTER LEVEL (TOP / TOE)	T124.80
BOUNDARY BATTER (MAX. 500mm HIGH)		LOT GRADE	1 in 150

**NOTES:**

1. DEPTHS OF CUT AND FILL AS MEASURED BETWEEN EXISTING AND FINISHED SURFACES.
2. BATTER MAXIMUM IN FRONT OF LOT 4 METRES
3. BATTER MAXIMUM TO SIDE OF LOT 2 METRES



Rev	Amendments	Approved	Date
E	LOT LAYOUT AMENDED	R.W.	31/08/21
D	TURNING MOVEMENT AREAS REMOVED	R.W.	25/08/21
C	TURNING MOVEMENT AREAS ADDED	R.W.	30/07/21
B	LOT 1538 CROSSOVER AMENDED	R.W.	13/07/21
A	ISSUED TO CLIENT	R.W.	01/07/21



System Certified

© Spiire Australia Pty Ltd All Rights Reserved

This document is produced by Spiire Australia Pty Ltd solely for the benefit of and use by the client in accordance with the terms of the retainer. Spiire Australia Pty Ltd does not and shall not assume any responsibility or liability whatsoever to any third party arising out of any use or reliance by third party on the content of this document.

**spiire**

L6 414 LA TROBE STREET PO BOX 16084 MELBOURNE  
VICTORIA 8007 AUSTRALIA T 61 3 9993 7888  
spiire.com.au ABN 55 050 029 635

**POTTER  
GEORGE**

Designed  
K. AYRES  
Authorised  
R. WILSON

**TRIJENA**  
MICKLEHAM

Checked  
D. SEVERINO  
Date  
01/07/21

**TRIJENA ESTATE  
STAGE 15**

**SALES PLAN**  
HUME CITY COUNCIL  
PGG (MICKLEHAM) PTY LTD

**PRELIMINARY** 304018C01

Rev  
E