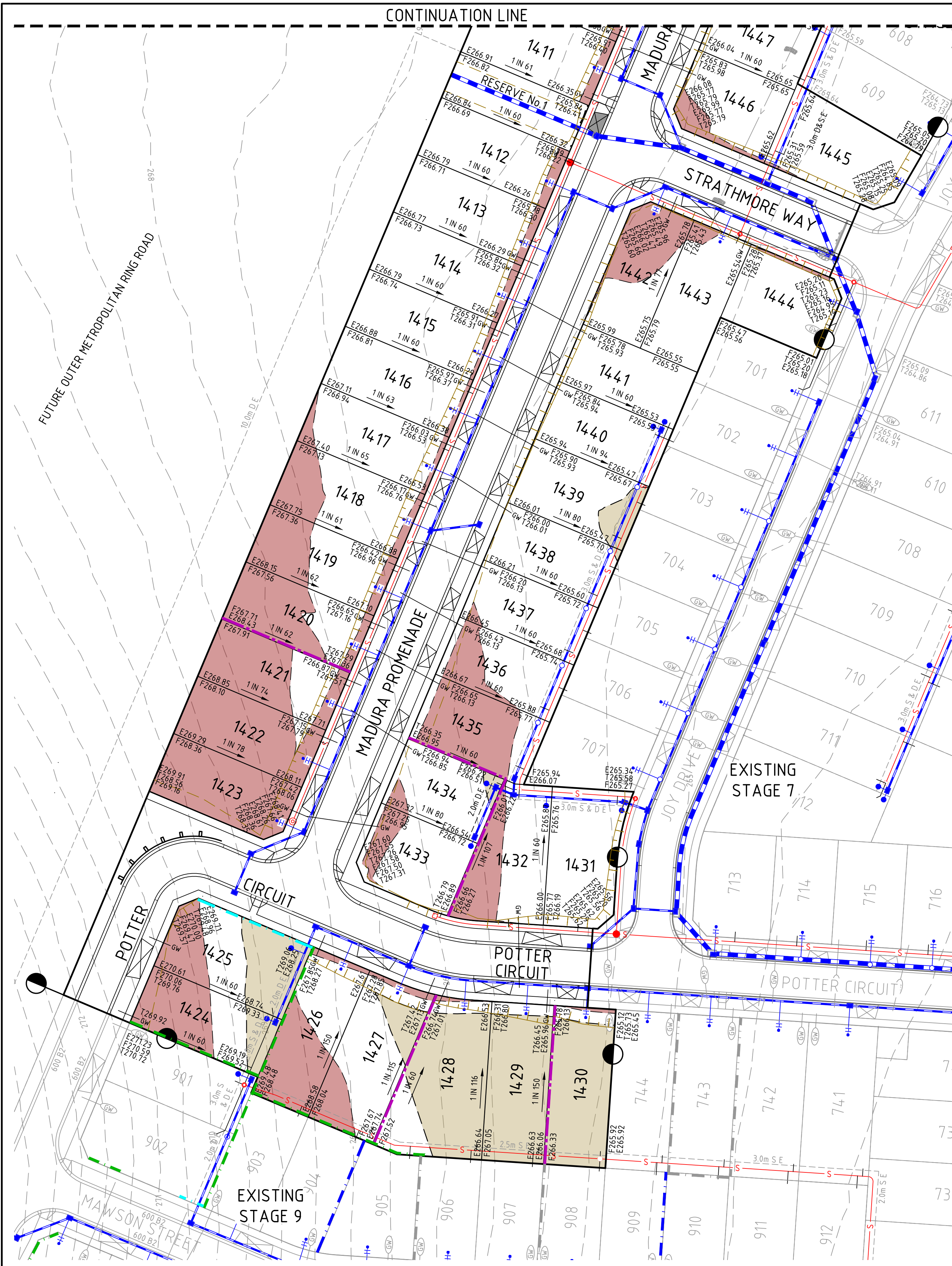


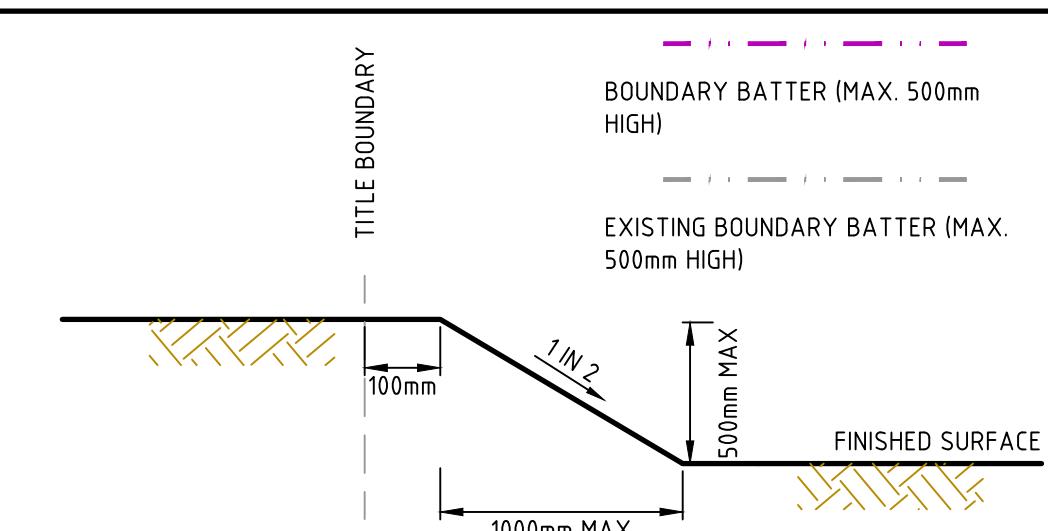
file name: 304017C - Spiire Plan - 1400 - layout items 001 plotted by: Kieran Ayres  
file location: \\spiire\media\304017C\304017C.dwg plot date: 18/02/2024 2:02 PM Sheet 1 of 1 Sheets



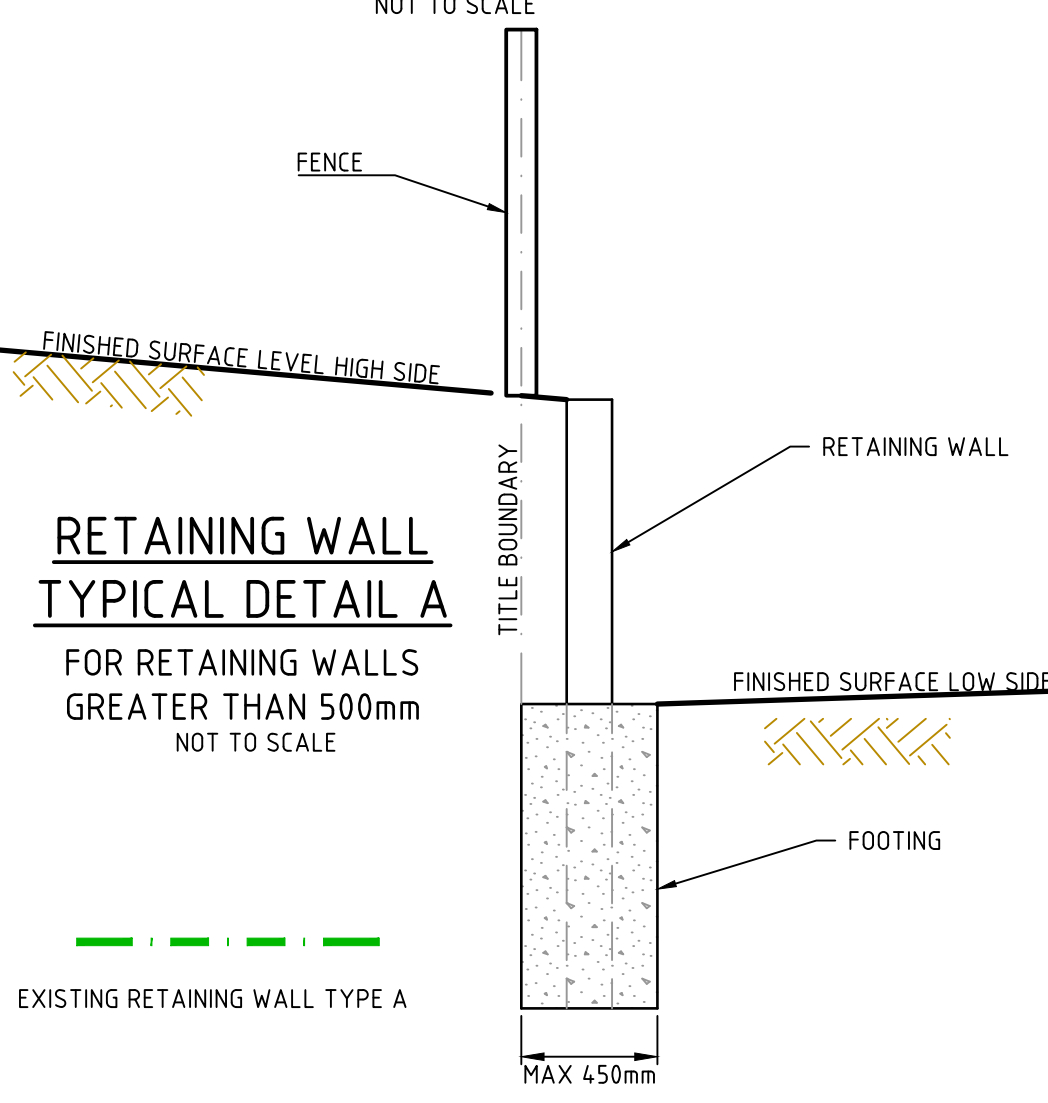
#### LEGEND

EXCAVATION GREATER THAN 0.20m		EXISTING SURFACE LEVEL	E123.45
FILLING GREATER THAN 0.20m		FINISHED SURFACE LEVEL	F124.68
BATTER		BATTER LEVEL (TOP / TOE)	T124.80
BOUNDARY BATTER (MAX. 500mm HIGH)		LOT GRADE	1 in 150

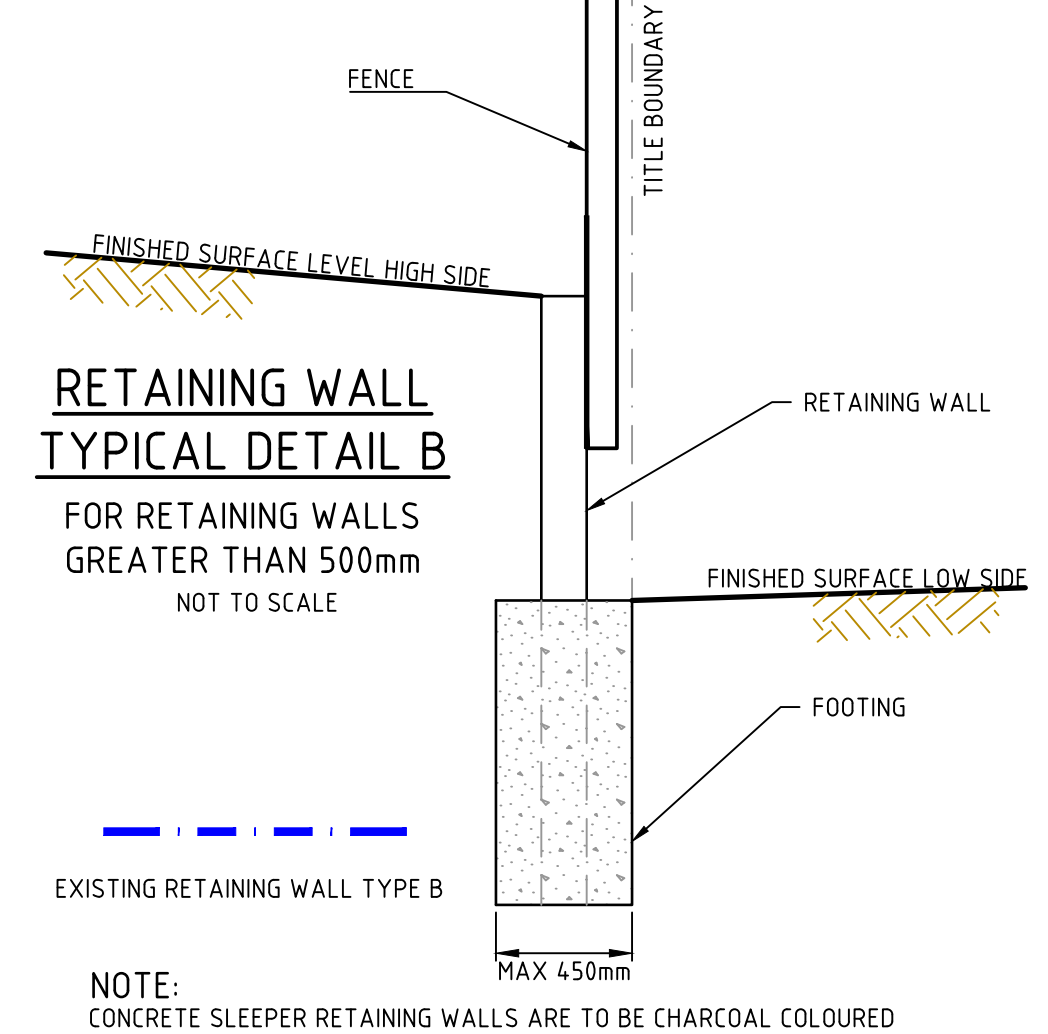
NOTES:  
1. DEPTHS OF CUT AND FILL AS MEASURED BETWEEN EXISTING AND FINISHED SURFACES.  
2. BATTER MAXIMUM IN FRONT OF LOT 4 METRES  
3. BATTER MAXIMUM TO SIDE OF LOT 2 METRES



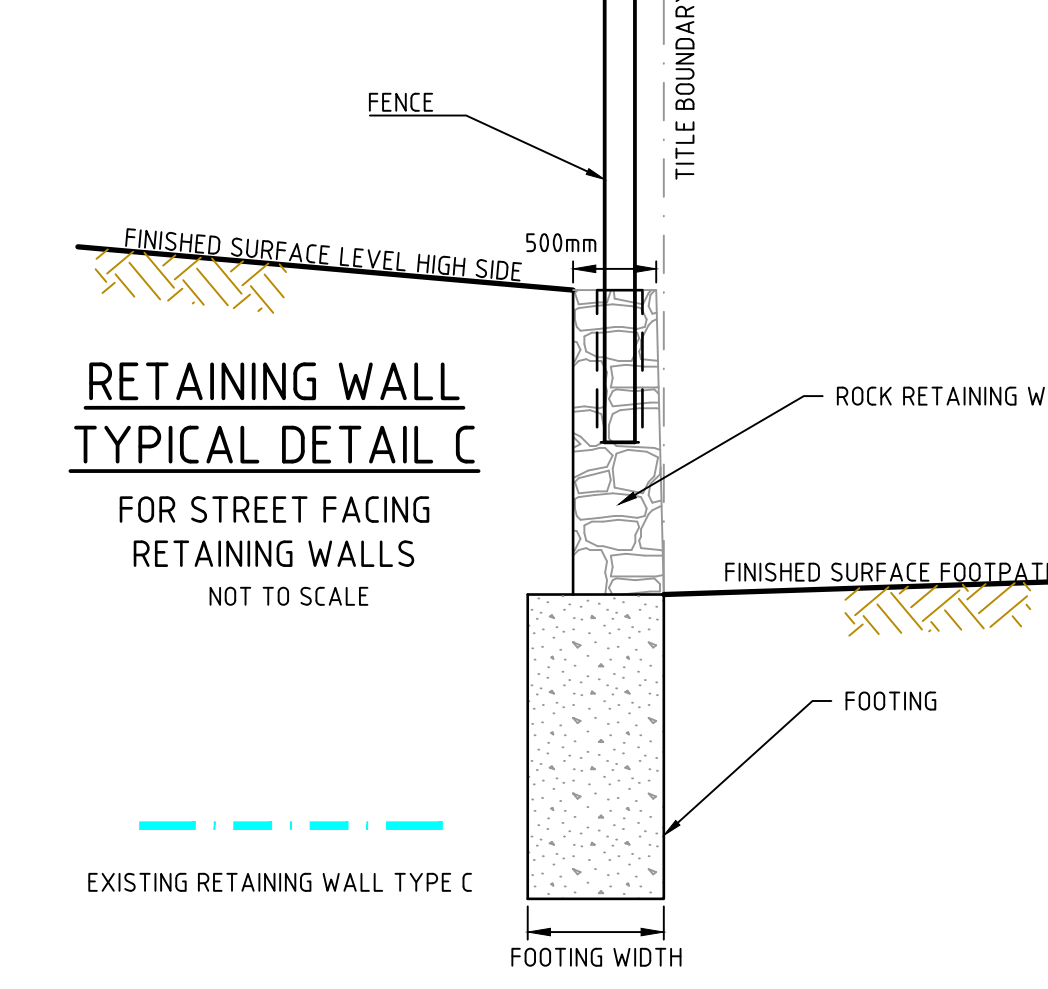
BOUNDARY BATTER SLOPE TYPICAL DETAIL  
BOUNDARY BATTER SLOPE UP TO 500mm  
NOT TO SCALE



RETAINING WALL  
TYPICAL DETAIL A  
FOR RETAINING WALLS  
GREATER THAN 500mm  
NOT TO SCALE

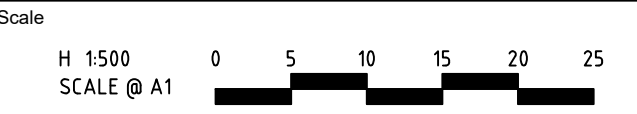


RETAINING WALL  
TYPICAL DETAIL B  
FOR RETAINING WALLS  
GREATER THAN 500mm  
NOT TO SCALE



RETAINING WALL  
TYPICAL DETAIL C  
FOR STREET FACING  
RETAINING WALLS  
NOT TO SCALE

Rev	Amendments	Approved	Date
B	AMENDED AS PER CLIENT COMMENTS	M.T.S.	10-02-21
A	ISSUED TO CLIENT	M.T.S.	05-02-21



System Certified

© Spiire Australia Pty Ltd All Rights Reserved  
This document is produced by Spiire Australia Pty Ltd solely for the benefit of and use by the client in accordance with the terms of the retainer. Spiire Australia Pty Ltd does not and shall not assume any responsibility or liability whatsoever to any third party arising out of any use or reliance by third party on the content of this document.

**spiire**

414 LA TROBE STREET PO BOX 16084 MELBOURNE  
VICTORIA 8007 AUSTRALIA T 61 3 9993 7888  
spiire.com.au ABN 55 050 029 635

**POTTER GEORGE**

Designed  
K.AYRES

Authorised  
M.TOOMER-SMITH

**TRIJENA**

Checked  
D.SEVERINO

Date  
05-02-21

**TRIJENA ESTATE  
STAGE 14**

**SALES PLAN**  
HUME CITY COUNCIL  
PGG (MICKLEHAM) PTY LTD

**PRELIMINARY**

Drg No  
**304017C01**

Rev  
**B**