

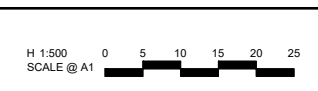
LEGEND

| | | | |
|-------------------------------|--|--------------------------|------------|
| EXCAVATION GREATER THAN 0.20m | | EXISTING SURFACE LEVEL | E123.45 |
| FILLING GREATER THAN 0.20m | | FINISHED SURFACE LEVEL | F124.68 |
| BATTER | | BATTER LEVEL (TOP / TOE) | T124.80 |
| | | LOT GRADE | ↓ 1 in 150 |

- NOTES:**
1. DEPTHS OF CUT AND FILL AS MEASURED BETWEEN EXISTING AND FINISHED SURFACES.
 2. BATTER MAXIMUM IN FRONT OF LOT 4 METRES
 3. BATTER MAXIMUM TO SIDE OF LOT 2 METRES

file name 304011CG100.dwg, layout name CG100, plotted by William May, file location C:\304011CG100\CG100.dwg, plot date 27/08/2020 2:12 PM, Sheet 1 of 1

| Rev | Description | Approved | Date |
|-----|----------------------------|----------|----------|
| E | AMENDED ORIENTATION SYMBOL | M.T-S | 27-08-20 |
| D | REVISED DESIGN | M.T. | 25-07-19 |
| C | REVISED DESIGN | M.T. | 01-05-19 |
| B | REVISED DESIGN | M.R. | 21-01-19 |
| A | ISSUED TO CLIENT | M.R. | 03-08-18 |



© Spiire Australia Pty Ltd All Rights Reserved
 This document is produced by Spiire Australia Pty Ltd solely for the benefit of and use by the client in accordance with the terms of the retainer. Spiire Australia Pty Ltd does not and shall not assume any responsibility or liability whatsoever to any third party arising out of any use or reliance by third party on the content of this document.

469 La Trobe Street PO Box 16084 Melbourne
 Victoria 8007 Australia T 61 3 9993 7888
 spiire.com.au ABN 55 050 029 635

| | |
|------------|---------|
| Designed | Checked |
| Authorised | Date |

TRIJENA
 STAGE 7
 GENERAL
 SALES PLAN
 HUME CITY COUNCIL
 PGG (MICKLEHAM) PTY LTD

PRELIMINARY Drg No 304011CG100 Rev E