

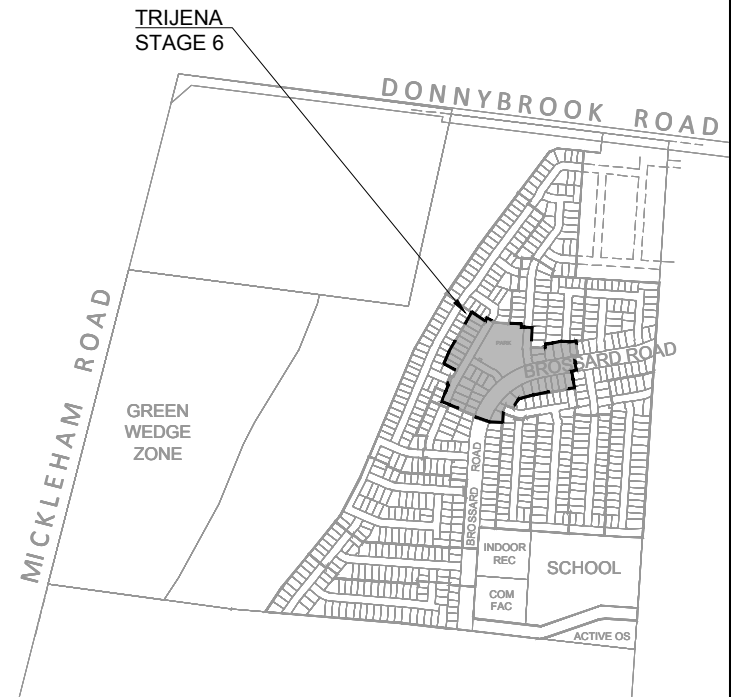
# TRIJENA

## STAGE 6 STREETSCAPES

PROJECT NUMBER: 304010

LANDSCAPE ARCHITECTURE DRAWINGS  
FOR PGG (MICKLEHAM) PTY LTD

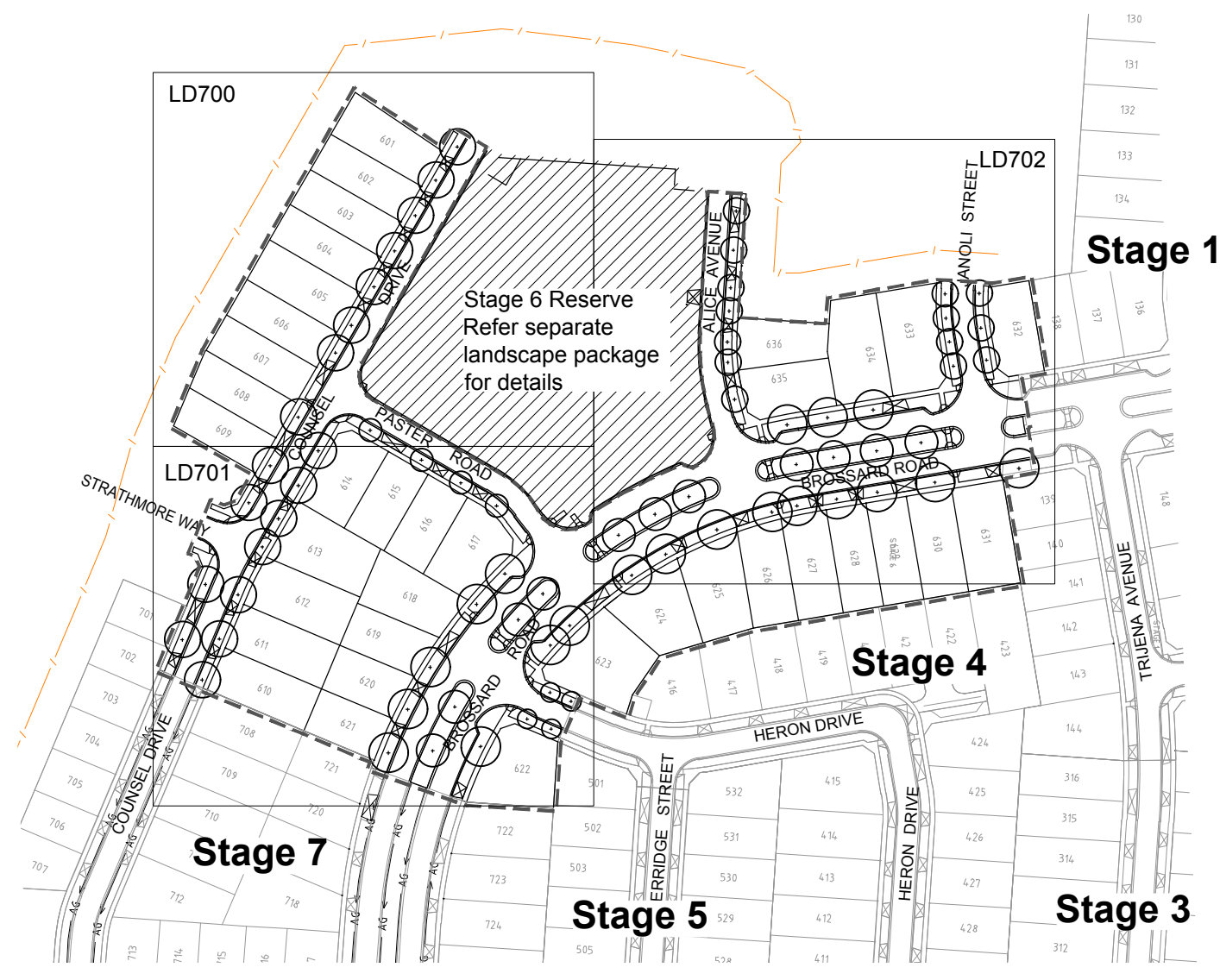
To be read in conjunction with specification (304010 L01)



2 SITE LOCATION  
LD100 Scale 1:7500 @ A1

### GENERAL NOTES

- Unless otherwise specified on the drawings all measurements, lengths, heights and distances to be determined from dimensions and NOT scaled off the drawings.
- Before commencement of any works it is the responsibility of the Landscape Contractor to contact Dial Before You Dig 1100 (Fax 1300 652 077) for information on services in the area shown on the plan (www.dialbeforeyoudig.com.au)
- The locations of underground services are approximate only and their exact position should be proven on site. No guarantee is given that all existing services are shown. The Contractor shall verify the location and depth of all services prior to commencing on site.
- The Contractor must have a copy of Melbourne One Call/Services information and plans on site at all times.
- The Contractor shall be liable for any damage to services during landscape works.
- All trees shall be planted in locations shown on this plan, with setout to be approved on site by the Superintendent prior to planting.
- Tree canopies are shown at 75% of mature diameter.
- Any change in plant species must have the approval of the Superintendent.
- Trees shall not be planted less than the following distances from existing elements, unless otherwise stated in the documentation:
  - ~ Pedestrian pathways - 1.2m
  - ~ Pedestrian pathways in reserve - 2.0m
  - ~ Driveways and crossovers - 3.0m
  - ~ Stormwater and sewerage pits - 2.0m
  - ~ Intersections - 10.0m
  - ~ Service crossings - 2.0m
  - ~ Back of Kerb - 1.0m min.
  - ~ Street lights and power poles - 4.0m
  - ~ Service assets, including junction boxes, pits etc - 2.0m
  - ~ Fire plugs - 3.0m
- The Superintendent is to inspect trees supplied by the Contractor prior to planting.
- The Principal will ensure that all property boundaries are to be pegged out by licensed surveyors prior to set out of landscape works.
- All drawings 'For Construction' to be printed in colour



1 EXTENT OF WORKS AND KEY PLAN  
LD100 Scale 1:1000 @ A1

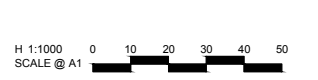
REFERENCE	DESCRIPTION	REVISION	SHEET No.
LD100	COVER SHEET	D	1
LD700	STREETSCAPE PLAN 1	D	2
LD701	STREETSCAPE PLAN 2	D	3
LD702	STREETSCAPE PLAN 3	D	4
LD900	LANDSCAPE DETAILS	D	5

PLANTING SCHEDULE						
TREES						
CODE	BOTANICAL NAME	COMMON NAME	QTY	DENSITY	INSTALL SIZE	MATURE SIZE (h x w)
At	<i>Acer truncatum x platanoides 'Norwegian Sunset'</i>	Norwegian Sunset Maple	20	as shown	min. 2.5m tall, 45L	12 x 12
Cm	<i>Corymbia maculata</i>	Spotted Gum	11	as shown	min. 2.5m tall, 45L	7 x 15
Em	<i>Eucalyptus leucoxylo 'Megalocarpa'</i>	Large Fruited Yellow Gum	11	as shown	min. 2.5m tall, 45L	8 x 5
Es	<i>Eucalyptus sideroxylon 'Rosea'</i>	Red Flowering Iron Bark	7	as shown	min. 2.5m tall, 45L	12 x 5
Pb	<i>Pyrus calleryana x Pyrus betulaeifolia</i>	Edgedell Pear	4	as shown	min. 2.5m tall, 45L	12 x 6
Qc	<i>Quercus cerris</i>	Turkey Oak	19	as shown	min. 2.5m tall, 45L	30x15
<b>Total</b>			<b>72</b>			

NOTE: ALL TREE STOCK USED IS TO MEET AUSTRALIAN STANDARD AS2303:2015 TREE STOCK FOR LANDSCAPE USE

file name: 304010\_L01.dwg, layout name: LD100, plotted by: Sarah Farrell, file location: \\spiire.com.au\nced\data\304010\_Landscape\product\plot\_date: 29/10/2018 3:00 PM Sheet 1 of 5 Sheets

Rev	Amendments	Approved	Date
D	FOR COUNCIL ENDORSEMENT	MS	29-10-18
C	AMENDED IN ACCORDANCE WITH COUNCIL COMMENTS	MS	18-09-18
B	ISSUED TO COUNCIL	MS	30-07-18
A	PRELIMINARY ISSUE	MS	27-07-18



© Spiire Australia Pty Ltd All Rights Reserved  
This document is produced by Spiire Australia Pty Ltd solely for the benefit of and use by the client in accordance with the terms of the retainer. Spiire Australia Pty Ltd does not and shall not assume any responsibility or liability whatsoever to any third party arising out of any use or reliance by third party on the content of this document.



414 La Trobe Street PO Box 16084 Melbourne  
Victoria 8007 Australia T 61 3 9993 7888  
spiire.com.au ABN 55 050 029 635

Designed  
S. FARRELL  
Authorised  
M.SANGALLI







Checked  
M. WOODBINE  
Date  
21-09-2018

**TRIJENA  
STAGE 6 STREETSCAPES  
COVER SHEET**

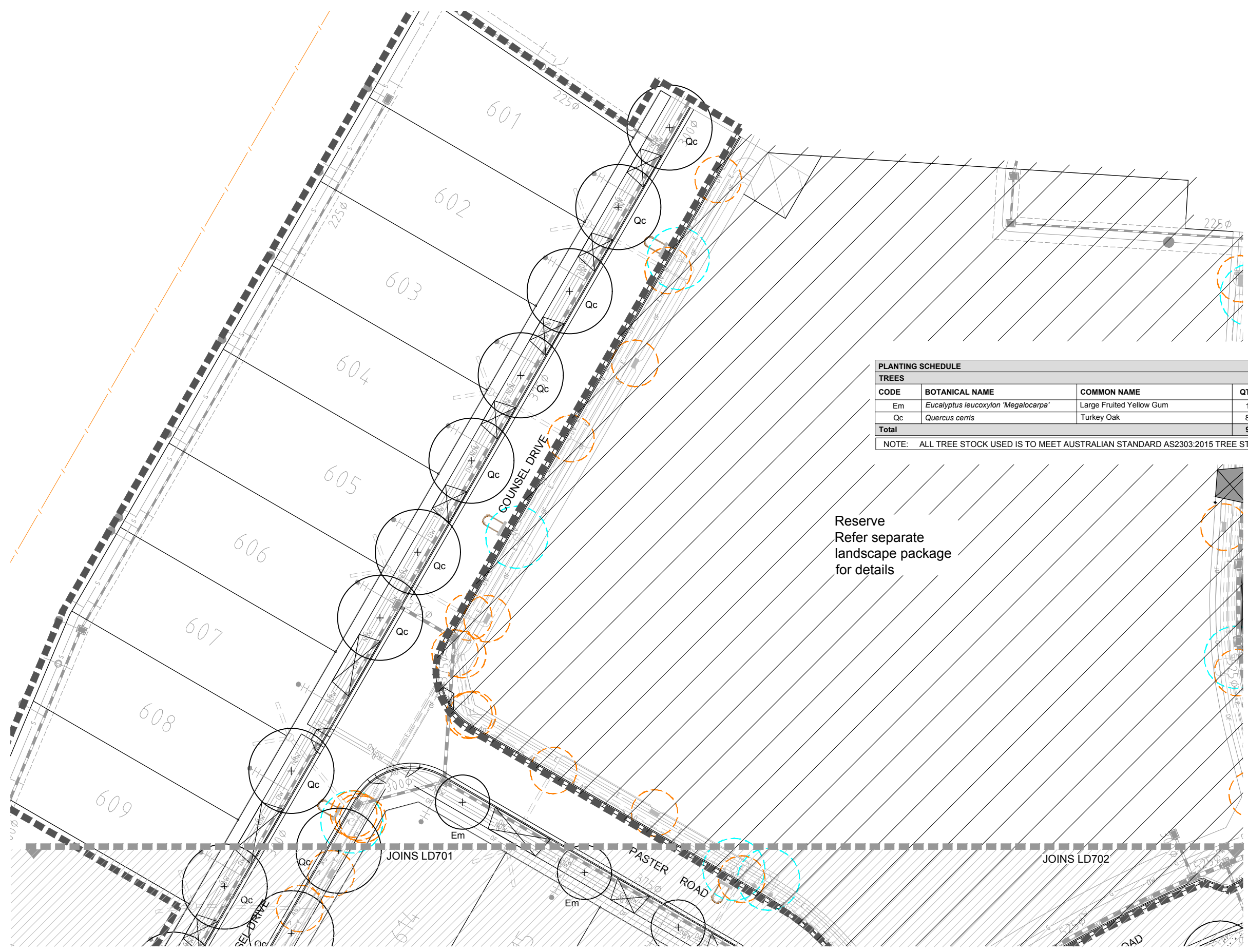
HUME CITY COUNCIL  
PGG (MICKLEHAM) PTY LTD

**PRELIMINARY** Drg No **304010LD100** Rev **D**

**LEGEND**

-  **Proposed Tree**  
As scheduled, detailed and specified
-  **Existing Underground Services**  
By others
-  **Street lights**  
By others
-  **4m Electrical Offset**
-  **3m Conduit End Offset**
-  **Extent of Works**

NOTE: GRASSING TO RESIDENTIAL NATURESTRIPS TO BE COMPLETED AS PART OF THE CIVIL WORKS.



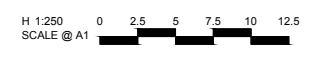
PLANTING SCHEDULE						
TREES						
CODE	BOTANICAL NAME	COMMON NAME	QTY	DENSITY	INSTALL SIZE	MATURE SIZE (h x w)
Em	<i>Eucalyptus leucoxylon</i> 'Megalocarpa'	Large Fruited Yellow Gum	1	as shown	min. 2.5m tall, 45L	8 x 5
Qc	<i>Quercus cerris</i>	Turkey Oak	8	as shown	min. 2.5m tall, 45L	30x15
<b>Total</b>			<b>9</b>			

NOTE: ALL TREE STOCK USED IS TO MEET AUSTRALIAN STANDARD AS2303:2015 TREE STOCK FOR LANDSCAPE USE

Reserve  
Refer separate  
landscape package  
for details

file name: 304010LD700\_Layout\_name\_L0700\_plotted by Sarah Farrell  
file location: \spiire.com.au\landscapes\product\plot date 29/10/2018 3:00 PM Sheet 2 of 5 Sheets

Rev	Amendments	Approved	Date
D	FOR COUNCIL ENDORSEMENT	MS	29-10-18
C	AMENDED IN ACCORDANCE WITH COUNCIL COMMENTS	MS	18-09-18
B	ISSUED TO COUNCIL	MS	30-07-18
A	PRELIMINARY ISSUE	MS	27-07-18



© Spiire Australia Pty Ltd All Rights Reserved  
This document is produced by Spiire Australia Pty Ltd solely for the benefit of and use by the client in accordance with the terms of the retainer. Spiire Australia Pty Ltd does not and shall not assume any responsibility or liability whatsoever to any third party arising out of any use or reliance by third party on the content of this document.



414 La Trobe Street PO Box 16084 Melbourne  
Victoria 8007 Australia T 61 3 9993 7888  
spiire.com.au ABN 55 050 029 635

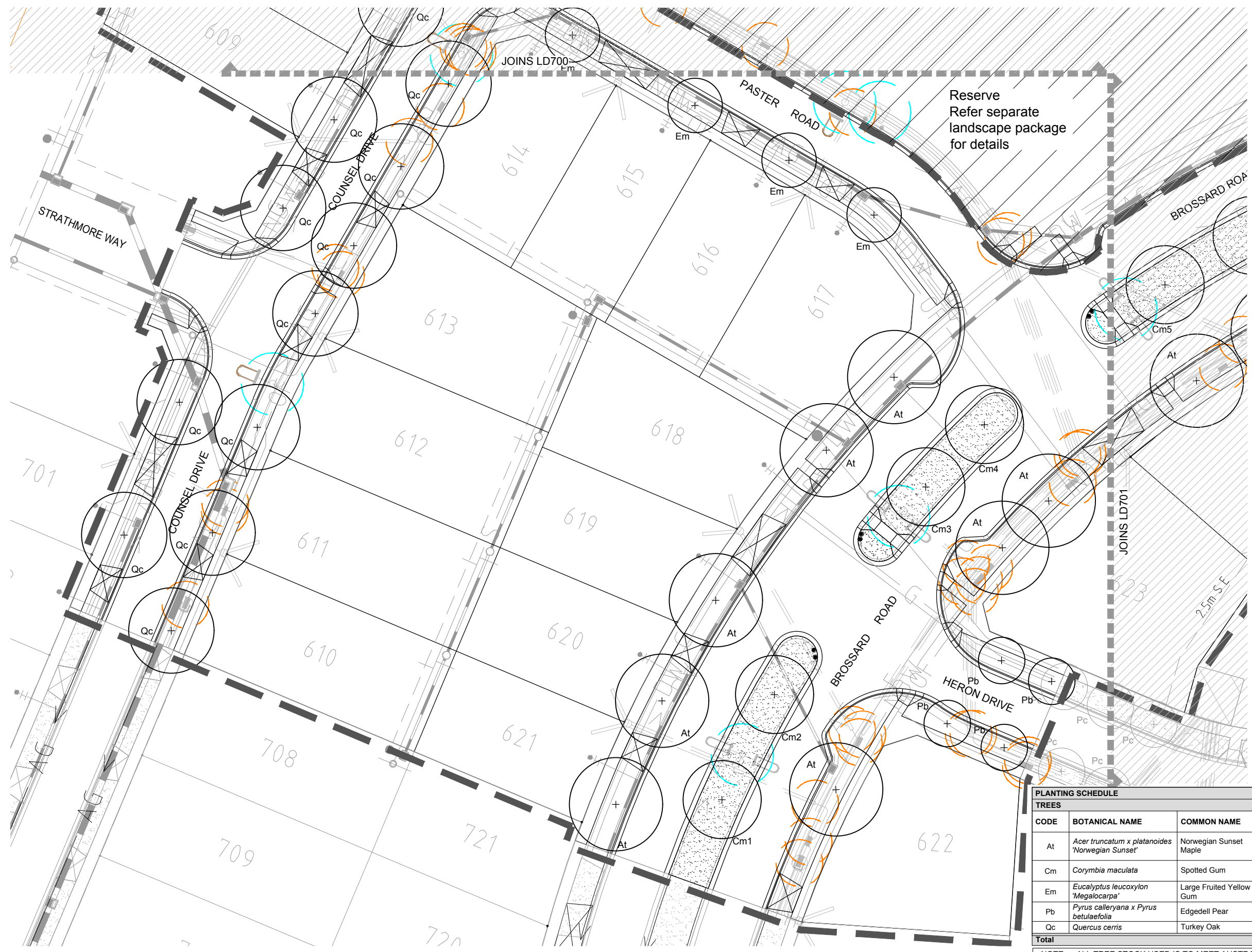
Designed  
**S. FARRELL**  
Authorised  
**M.SANGALLI**

Checked  
**M. WOODBINE**  
Date  
21-09-2018

**TRIJENA  
STAGE 6 STREETSCAPES  
STREETSCAPE PLAN 1**

HUME CITY COUNCIL  
PGG (MICKLEHAM) PTY LTD

**PRELIMINARY** Drg No **304010LD700** Rev **D**



### LEGEND

- Proposed Tree  
As scheduled, detailed and specified
- Hydro Seed Grass  
As scheduled, detailed and specified
- Existing Underground Services  
By others
- Street lights  
By others
- 4m Electrical Offset
- 3m Conduit End Offset
- Extent of Works

NOTE: GRASSING TO RESIDENTIAL NATURESTRIPS TO BE COMPLETED AS PART OF THE CIVIL WORKS.

PLANTING SCHEDULE						
TREES						
CODE	BOTANICAL NAME	COMMON NAME	QTY	DENSITY	INSTALL SIZE	MATURE SIZE (h x w)
At	<i>Acer truncatum x platanoides</i> 'Norwegian Sunset'	Norwegian Sunset Maple	8	as shown	min. 2.5m tall, 45L	12 x 12
Cm	<i>Corymbia maculata</i>	Spotted Gum	4	as shown	min. 2.5m tall, 45L	7 x 15
Em	<i>Eucalyptus leucoxylo</i> 'Megalocarpa'	Large Fruited Yellow Gum	3	as shown	min. 2.5m tall, 45L	8 x 5
Pb	<i>Pyrus calleryana x Pyrus betulaeifolia</i>	Edgedell Pear	4	as shown	min. 2.5m tall, 45L	12 x 6
Qc	<i>Quercus cerris</i>	Turkey Oak	11	as shown	min. 2.5m tall, 45L	30x15
<b>Total</b>			<b>19</b>			

NOTE: ALL TREE STOCK USED IS TO MEET AUSTRALIAN STANDARD AS2303:2015 TREE STOCK FOR LANDSCAPE USE

file name: 304010LD701.dwg, layout name: LD701, plotted by: Sarah Farrell, file location: \\spiire.com.au\in\projects\304010LD701\landscape\product, plot date: 29/10/2018 3:00 PM Sheet 3 of 5 Sheets

Rev	Amendments	Approved	Date
D	FOR COUNCIL ENDORSEMENT	MS	29-10-18
C	AMENDED IN ACCORDANCE WITH COUNCIL COMMENTS	MS	18-09-18
B	ISSUED TO COUNCIL	MS	30-07-18
A	PRELIMINARY ISSUE	MS	27-07-18

H 1:250  
SCALE @ A1

© Spiire Australia Pty Ltd All Rights Reserved  
This document is produced by Spiire Australia Pty Ltd solely for the benefit of and use by the client in accordance with the terms of the retainer. Spiire Australia Pty Ltd does not and shall not assume any responsibility or liability whatsoever to any third party arising out of any use or reliance by third party on the content of this document.

414 La Trobe Street PO Box 16084 Melbourne  
Victoria 8007 Australia T 61 3 9993 7888  
spiire.com.au ABN 55 050 029 635

Designed  
**S. FARRELL**

Checked  
**M. WOODBINE**

Authorised  
**M. SANGALLI**







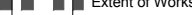
Date  
**21-09-2018**

**TRIJENA**  
**STAGE 6 STREETSCAPES**  
**STREETSCAPE PLAN 2**

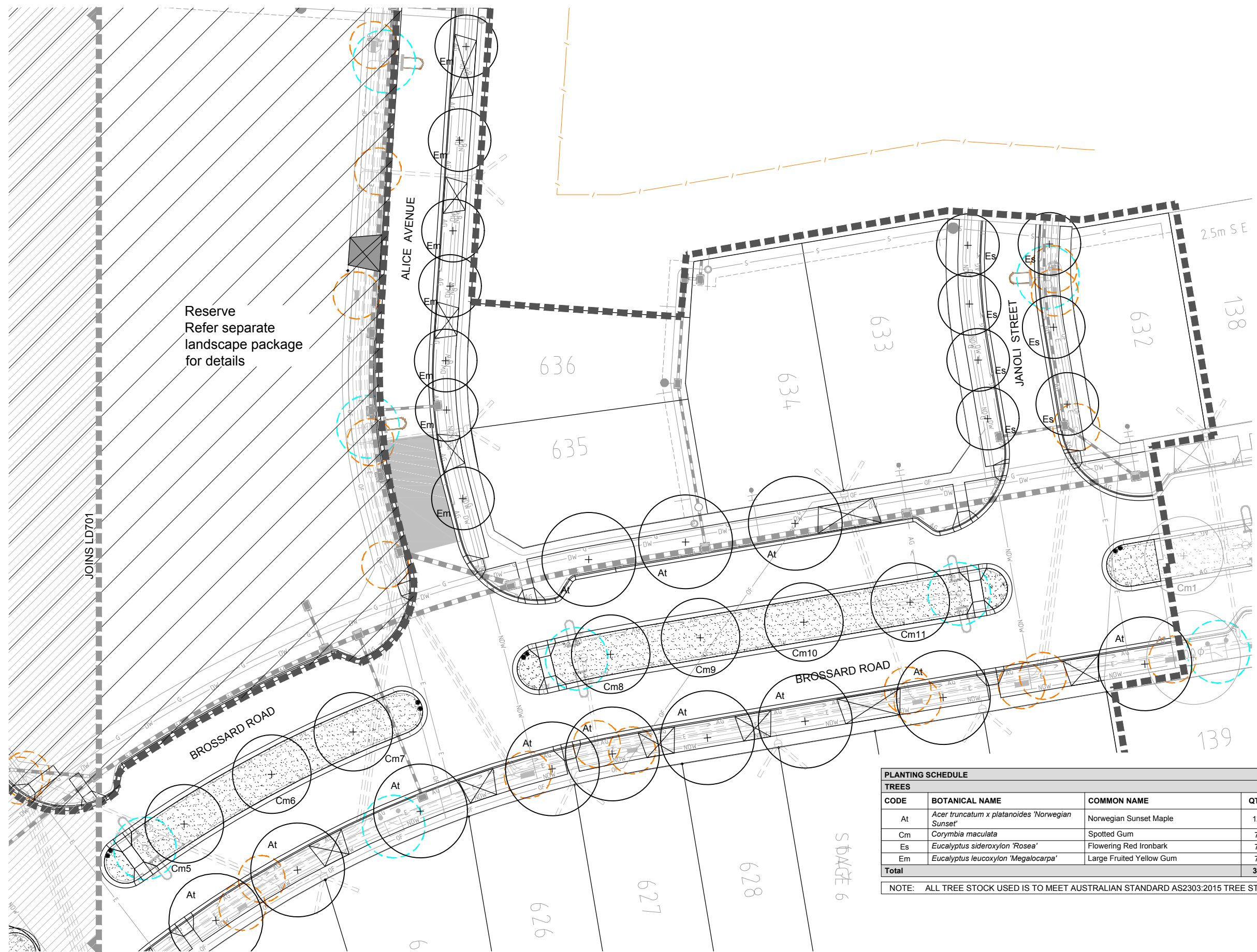
HUME CITY COUNCIL  
PGG (MICKLEHAM) PTY LTD

**PRELIMINARY** Drg No **304010LD701** Rev **D**

**LEGEND**

-  **Proposed Tree**  
As scheduled, detailed and specified
-  **Hydro Seed Grass**  
As scheduled, detailed and specified
-  **Existing Underground Services**  
By others
-  **Street lights**  
By others
-  **4m Electrical Offset**
-  **3m Conduit End Offset**
-  **Extent of Works**

NOTE: GRASSING TO RESIDENTIAL NATURESTRIPS TO BE COMPLETED AS PART OF THE CIVIL WORKS.

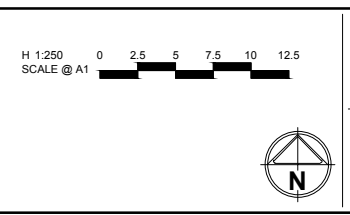


PLANTING SCHEDULE						
TREES						
CODE	BOTANICAL NAME	COMMON NAME	QTY	DENSITY	INSTALL SIZE	MATURE SIZE (h x w)
At	<i>Acer truncatum x platanoides 'Norwegian Sunset'</i>	Norwegian Sunset Maple	12	as shown	min. 2.5m tall, 45L	12 x 12
Cm	<i>Corymbia maculata</i>	Spotted Gum	7	as shown	min. 2.5m tall, 45L	7x15
Es	<i>Eucalyptus sideroxylon 'Rosea'</i>	Flowering Red Ironbark	7	as shown	min. 2.5m tall, 45L	12 x 5
Em	<i>Eucalyptus leucoxylon 'Megalocarpa'</i>	Large Fruited Yellow Gum	7	as shown	min. 2.5m tall, 45L	7 x 15
<b>Total</b>			<b>33</b>			

NOTE: ALL TREE STOCK USED IS TO MEET AUSTRALIAN STANDARD AS2303:2015 TREE STOCK FOR LANDSCAPE USE

file name: 304010LD701.dwg, layout name: LD702, plotted by: Sarah Farrell, file location: \\spiire.com.au\shared\data\304010LD701\landscape\product, plot date: 29/10/2018 3:00 PM Sheet 4 of 5 Sheets

Rev	Amendments	Approved	Date
D	FOR COUNCIL ENDORSEMENT	MS	29-10-18
C	AMENDED IN ACCORDANCE WITH COUNCIL COMMENTS	MS	18-09-18
B	ISSUED TO COUNCIL	MS	30-07-18
A	PRELIMINARY ISSUE	MS	27-07-18



© Spiire Australia Pty Ltd All Rights Reserved  
This document is produced by Spiire Australia Pty Ltd solely for the benefit of and use by the client in accordance with the terms of the retainer. Spiire Australia Pty Ltd does not and shall not assume any responsibility or liability whatsoever to any third party arising out of any use or reliance by third party on the content of this document.

414 La Trobe Street PO Box 16084 Melbourne  
Victoria 8007 Australia T 61 3 9993 7888  
spiire.com.au ABN 55 050 029 635

Designed  
**S. FARRELL**

Authorised  
**M.SANGALLI**

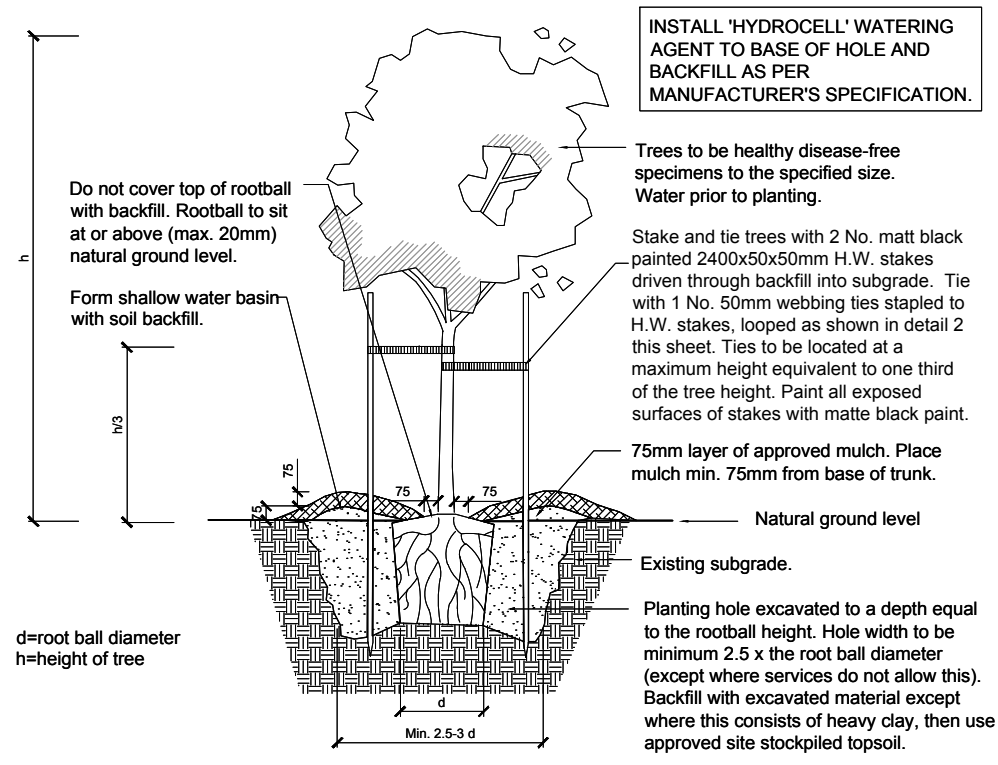
Checked  
**M. WOODBINE**

Date  
21-09-2018

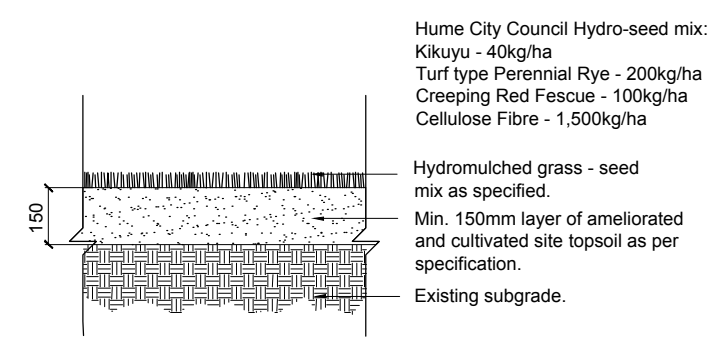
**TRIJENA**  
**STAGE 6 STREETSCAPES**  
**STREETSCAPE PLAN 3**

HUME CITY COUNCIL  
PGG (MICKLEHAM) PTY LTD

**PRELIMINARY** Drg No **304010LD702** Rev **D**

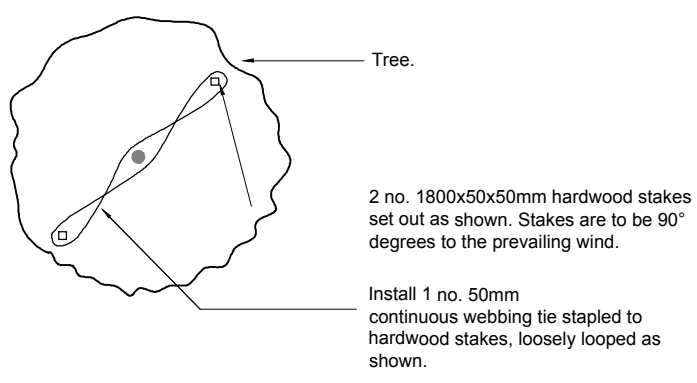


**1 SEMI-ADVANCED TREE PLANTING DETAIL**  
LD900 Scale 1:20 @ A1



- NOTES:**
- Existing pasture grass and/or weeds are to be sprayed with herbicide.
  - Grass areas to be cultivated to 150mm depth and ameliorated as per topsoil report.
  - Topsoil to be raked to a fine tilth, removal of all surface rocks, large lumps of clay, weeds, rubbish prior to application of hydromulch to all areas as shown.
  - New grassed areas to be protected from trespass and traffic with star pickets and barrier rope until grass is established.
  - Soil binder, specifically manufactured for Hydromulching, used at manufacturers recommended rates. (Eg. Organic Tackifiers 20 - 30 kg/ha, based on, site conditions.) Bitumen binders are not accepted by Council.
  - Hydroseeding is required to have established to a minimum 80% coverage and have achieved first cut before landscape works can be placed on maintenance.

**3 HYDROMULCH GRASS DETAIL**  
LD900 Scale 1:10 @ A1



**2 SEMI ADVANCED TREE TIE DETAIL**  
LD900 Scale 1:20 @ A1

file name: 304010LD900\_A1.dwg, layout name: LD900, plotted by: Sarah Farrell, file location: \\spiire.com.au\ines\data\304010LD900\landscapes\product, plot date: 29/10/2018 3:00 PM, Sheet 5 of 5 Sheets

Rev	Amendments	Approved	Date
A	PRELIMINARY ISSUE	MS	27-07-18
B	ISSUED TO COUNCIL	MS	30-07-18
C	AMENDED IN ACCORDANCE WITH COUNCIL COMMENTS	MS	18-09-18
D	FOR COUNCIL ENDORSEMENT	MS	29-10-18

**AS SHOWN**

© Spiire Australia Pty Ltd All Rights Reserved  
This document is produced by Spiire Australia Pty Ltd solely for the benefit of and use by the client in accordance with the terms of the retainer. Spiire Australia Pty Ltd does not and shall not assume any responsibility or liability whatsoever to any third party arising out of any use or reliance by third party on the content of this document.

414 La Trobe Street PO Box 16084 Melbourne  
Victoria 8007 Australia T 61 3 9993 7888  
spiire.com.au ABN 55 050 029 635

Designed  
**S. FARRELL**

Authorised  
**M.SANGALLI**

Checked  
**M. WOODBINE**

Date  
21-09-2018

**TRIJENA  
STAGE 6 STREETSCAPES  
LANDSCAPE DETAILS**

HUME CITY COUNCIL  
PGG (MICKLEHAM) PTY LTD

**PRELIMINARY** Drg No **304010LD900** Rev **D**