



Lot 714 (263m<sup>2</sup>)

Potter Circuit, Trijena Estate Mickleham 3064

**Up-H13 - SLHC**

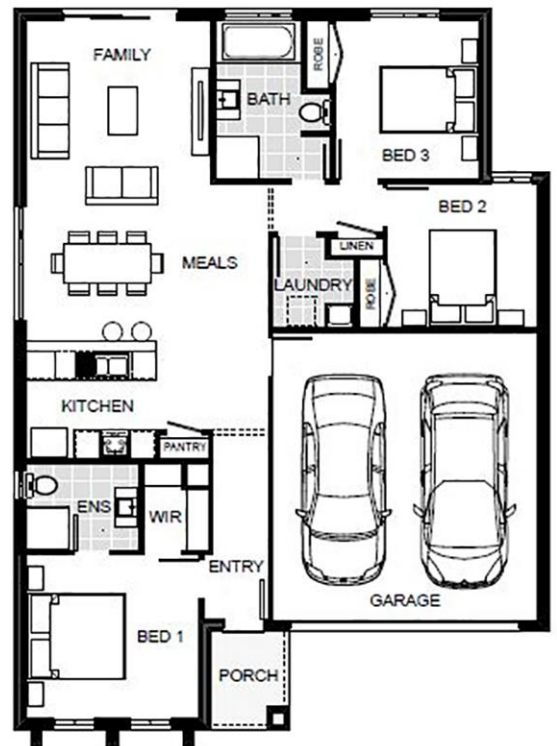
16.6sq

3.0 2.0 Double

FROM  
**\$408,256\***

**Inclusions:**

- Spacious Meals & Family Area
- Stainless Steel 600mm Appliances
- Solar Hot Water System
- Chrome finish leversets
- Sectional Garage Door
- Colorbond Roof
- 6 Star Energy Rating
- Bushfire Attack Level 12.5 Included
- Bluescope Steel House Frame
- 50 Year Structural Guarantee
- Up - Coloured concrete Driveway up to 30sqm
- Up - Caesarstone Benchtops to Kitchen and Vanities
- Developer Guideline - Recycled water
- Mid-Year Price Slash Offer 10K off Up
- Up - NBN Fibre Package
- Up - Floor Coverings
- B&D Panel Lift Door w/ Remote



**FOR ENQUIRIES CONTACT:**

**Benjamin Stewart M: 1300 545 464 | EMAIL: HOUSEANDLAND@JGKING.COM.AU**

[WWW.JGKINGHOMES.COM.AU](http://WWW.JGKINGHOMES.COM.AU)

\*Terms and conditions apply. Package price is based on standard floorplan and builders preferred siting. All packages are subject to developer approval and availability. Images are for illustration purposes only and may depict fixtures, finishes and features either not supplied or that are upgrade options. JG King reserves the right to withdraw or alter the prices at any time without notice. Rock excavation and removal is not included in the price and site costs are subject to site conditions. BAL 12.5 is delivered as standard; COLORBOND Roof, Steel Frame etc. Speak to a JG King Representative for a full list of items that make a home BAL 12.5 compliant and find out more about the specific house and land specifications and inclusions. Copyright © 2018 Reproduction in any form either in whole or part is forbidden.

JG King Pty Ltd (T/A J G King Homes) ABN 21 006 627 210 Registered Building Practitioner Licence CDB-U 49366  
Based on land price of: \$219,000