

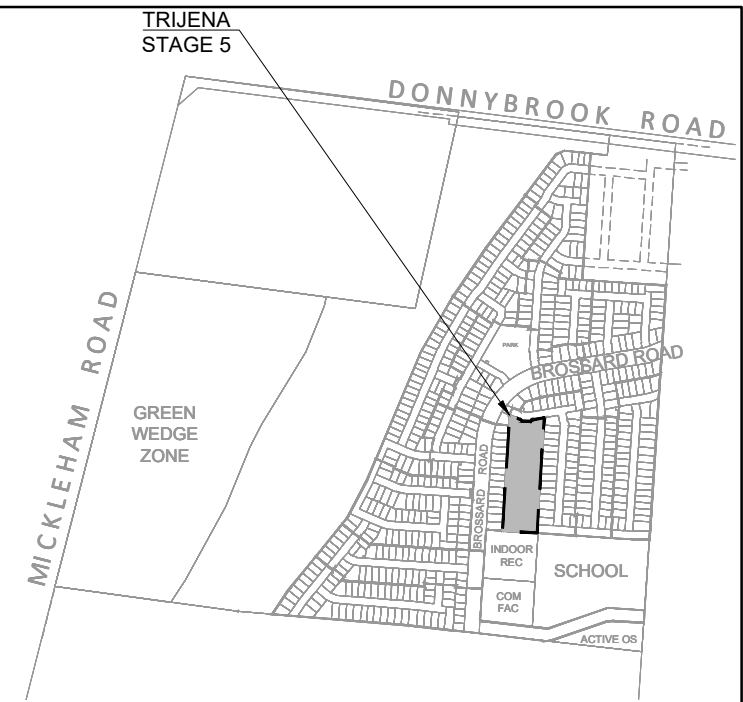
# TRIJENA

## STAGE 5 STREETSAPES

PROJECT NUMBER: 304009

LANDSCAPE ARCHITECTURE DRAWINGS  
FOR PGG (MICKLEHAM) PTY LTD

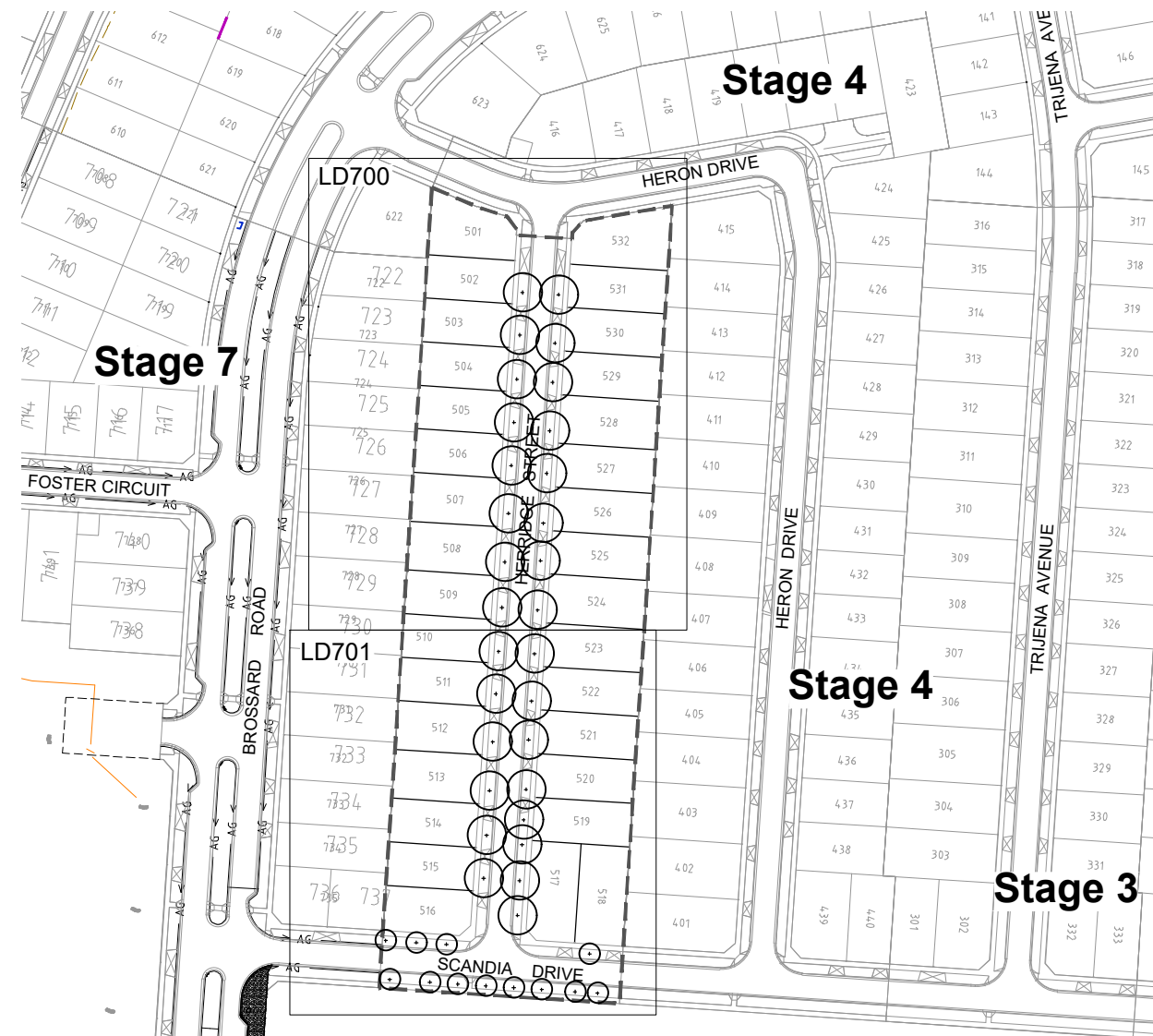
To be read in conjunction with specification (304009 L01)



2 SITE LOCATION  
LD100 Scale 1:7500 @ A1

### GENERAL NOTES

- Unless otherwise specified on the drawings all measurements, lengths, heights and distances to be determined from dimensions and NOT scaled off the drawings.
- Before commencement of any works it is the responsibility of the Landscape Contractor to contact Dial Before You Dig 1100 (Fax 1300 652 077) for information on services in the area shown on the plan (www.dialbeforeyoudig.com.au)
- The locations of underground services are approximate only and their exact position should be proven on site. No guarantee is given that all existing services are shown. The Contractor shall verify the location and depth of all services prior to commencing on site.
- The Contractor must have a copy of Melbourne One Call/Services information and plans on site at all times.
- The Contractor shall be liable for any damage to services during landscape works.
- All trees shall be planted in locations shown on this plan, with setout to be approved on site by the Superintendent prior to planting.
- Tree canopies are shown at 75% of mature diameter.
- Any change in plant species must have the approval of the Superintendent.
- Trees shall not be planted less than the following distances from existing elements, unless otherwise stated in the documentation:
  - Pedestrian pathways - 1.2m
  - Pedestrian pathways in reserve - 2.0m
  - Driveways and crossovers - 3.0m
  - Stormwater and sewerage pits - 2.0m
  - Intersections - 10.0m
  - Service crossings - 2.0m
  - Back of Kerb - 1.0m min.
  - Street lights and power poles - 4.0m
  - Service assets, including junction boxes, pits etc - 2.0m
  - Fire plugs - 3.0m
- The Superintendent is to inspect trees supplied by the Contractor prior to planting.
- The Principal will ensure that all property boundaries are to be pegged out by licensed surveyors prior to set out of landscape works.
- All drawings 'For Construction' to be printed in colour



1 EXTENT OF WORKS AND KEY PLAN  
LD100 Scale 1:1000 @ A1

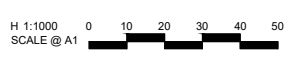
DRAWING SCHEDULE			
REFERENCE	DESCRIPTION	REVISION	SHEET No.
LD100	COVER SHEET	D	1
LD700	STREETScape PLAN 1	D	2
LD701	STREETScape PLAN 2	D	3
LD900	LANDSCAPE DETAILS	D	4

PLANTING SCHEDULE						
TREES						
CODE	BOTANICAL NAME	COMMON NAME	QTY	DENSITY	INSTALL SIZE	MATURE SIZE (h x w)
Qc	<i>Quercus cerris</i>	Turkey Oak	30	as shown	min. 1.8m tall, 45L	30x15
Pc	<i>Pyrus calleryana</i> 'Chanticleer'	Ornamental Pear	12	as shown	min. 1.8m tall, 45L	8 x 6
<b>Total</b>			<b>42</b>			

NOTE: ALL TREE STOCK USED IS TO MEET AUSTRALIAN STANDARD AS2303:2015 TREE STOCK FOR LANDSCAPE USE

file name: 304009 L01.dwg, layout name: LD100, plotted by: Martin Woodbine, file location: G:\304009\Landscapes\Products\plot date 18/07/2019 2:38 PM Sheet 1 of 4, Sheet's

Rev	Description	Approved	Date
0	ISSUED FOR TENDER	MB	18-07-19
D	FOR COUNCIL ENDORSEMENT	MS	29-10-18
C	AMENDED IN ACCORDANCE WITH COUNCIL COMMENTS	MS	18-09-18
B	ISSUED TO COUNCIL	MS	30-07-18
A	PRELIMINARY ISSUE	MS	27-07-18
	Amendments	Approved	Date



© Spiire Australia Pty Ltd All Rights Reserved  
This document is produced by Spiire Australia Pty Ltd solely for the benefit of and use by the client in accordance with the terms of the contract. Spiire Australia Pty Ltd does not and shall not assume any responsibility or liability whatsoever to any third party arising out of any use or reliance by third party on the content of this document.



469 La Trobe Street PO Box 16084 Melbourne  
Victoria 8007 Australia T 61 3 9993 7888  
spiire.com.au ABN 55 050 029 635

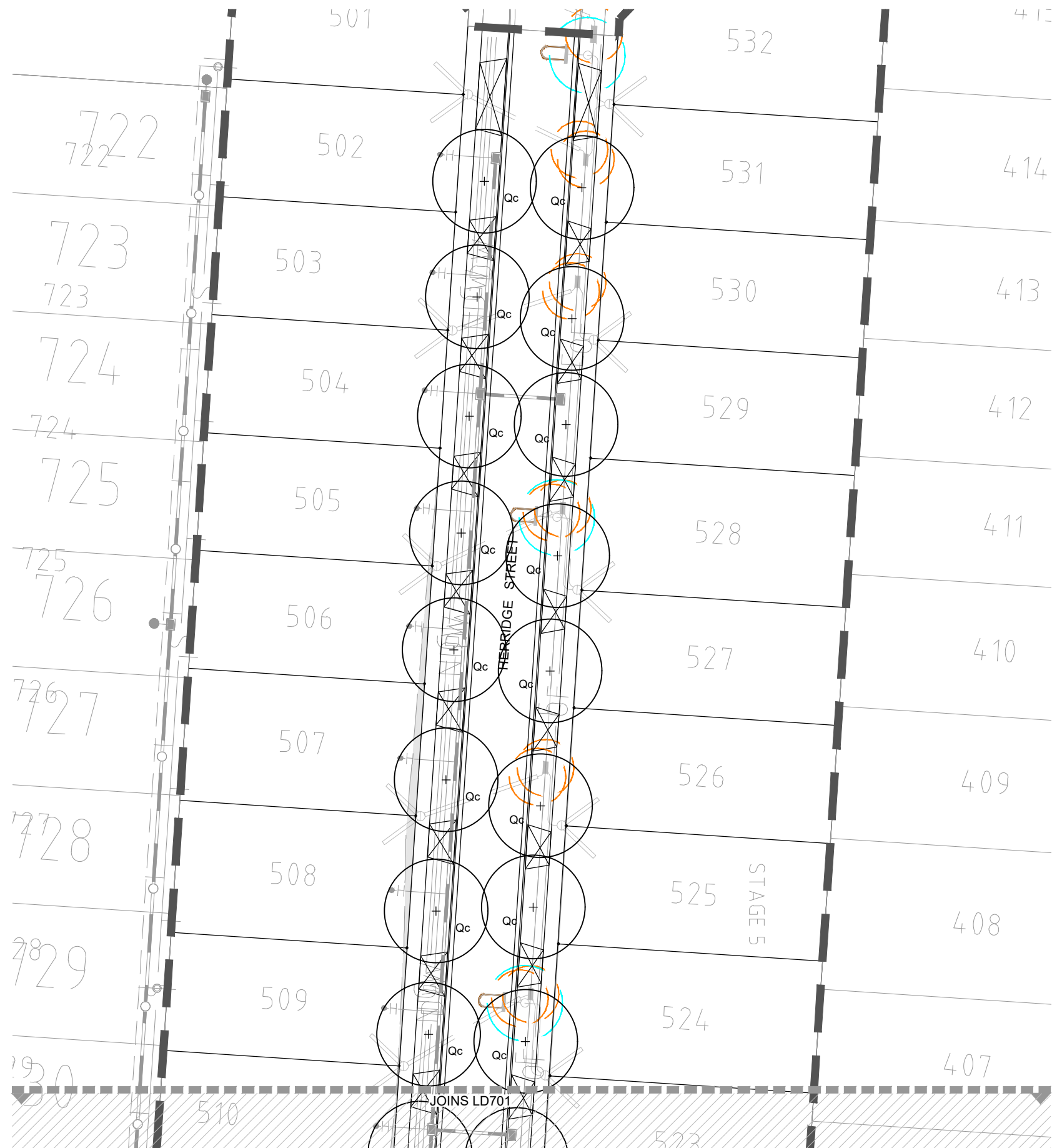
Designed  
**S.FARRELL**  
Authorised  
**M.SANGALLI**

Checked  
**M.WOODBINE**  
Date  
21-09-2018

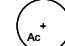

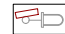



**TRIJENA  
STAGE 5 STREETSAPES  
COVER SHEET**

HUME CITY COUNCIL  
PGG (MICKLEHAM) PTY LTD

**TENDER** Drg No **304009LD100** Rev **0**



**LEGEND**

-  **Proposed Tree**  
As scheduled, detailed and specified
-  **Existing Underground Services**  
By others
-  **Street lights**  
By others
-  **4m Electrical Offset**
-  **3m Conduit End Offset**
-  **Extent of Works**

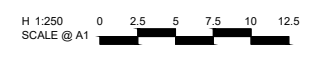
NOTE: GRASSING TO RESIDENTIAL NATURESTRIPS TO BE COMPLETED AS PART OF

PLANTING SCHEDULE						
TREES						
CODE	BOTANICAL NAME	COMMON NAME	QTY	DENSITY	INSTALL SIZE	MATURE SIZE (h x w)
Qc	<i>Quercus cerris</i>	Turkey Oak	16	as shown	min. 1.8m tall, 45L	30x15
<b>Total</b>			<b>16</b>			

NOTE: ALL TREE STOCK USED IS TO MEET AUSTRALIAN STANDARD AS2303:2015 TREE STOCK FOR LANDSCAPE USE

file name: 304009L01.dwg, layout name: LD700, plotted by: Martin Woodbine, file location: G:\304009\Landscapes\product, plot date: 18/07/2019 2:38 PM, Sheet 2 of 4, Sheets

Rev	Amendments	Approved	Date
0	ISSUED FOR TENDER	MB	18-07-19
D	FOR COUNCIL ENDORSEMENT	MS	29-10-18
C	AMENDED IN ACCORDANCE WITH COUNCIL COMMENTS	MS	18-09-18
B	ISSUED TO COUNCIL	MS	30-07-18
A	PRELIMINARY ISSUE	MS	27-07-18




© Spiire Australia Pty Ltd All Rights Reserved  
This document is produced by Spiire Australia Pty Ltd solely for the benefit of and use by the client in accordance with the terms of the retainer. Spiire Australia Pty Ltd does not and shall not assume any responsibility or liability whatsoever to any third party arising out of any use or reliance by third party on the content of this document.



469 La Trobe Street PO Box 16084 Melbourne  
Victoria 8007 Australia T 61 3 9993 7888  
spiire.com.au ABN 55 050 029 635

Designed  
**S.FARRELL**

Checked  
**M.WOODBINE**

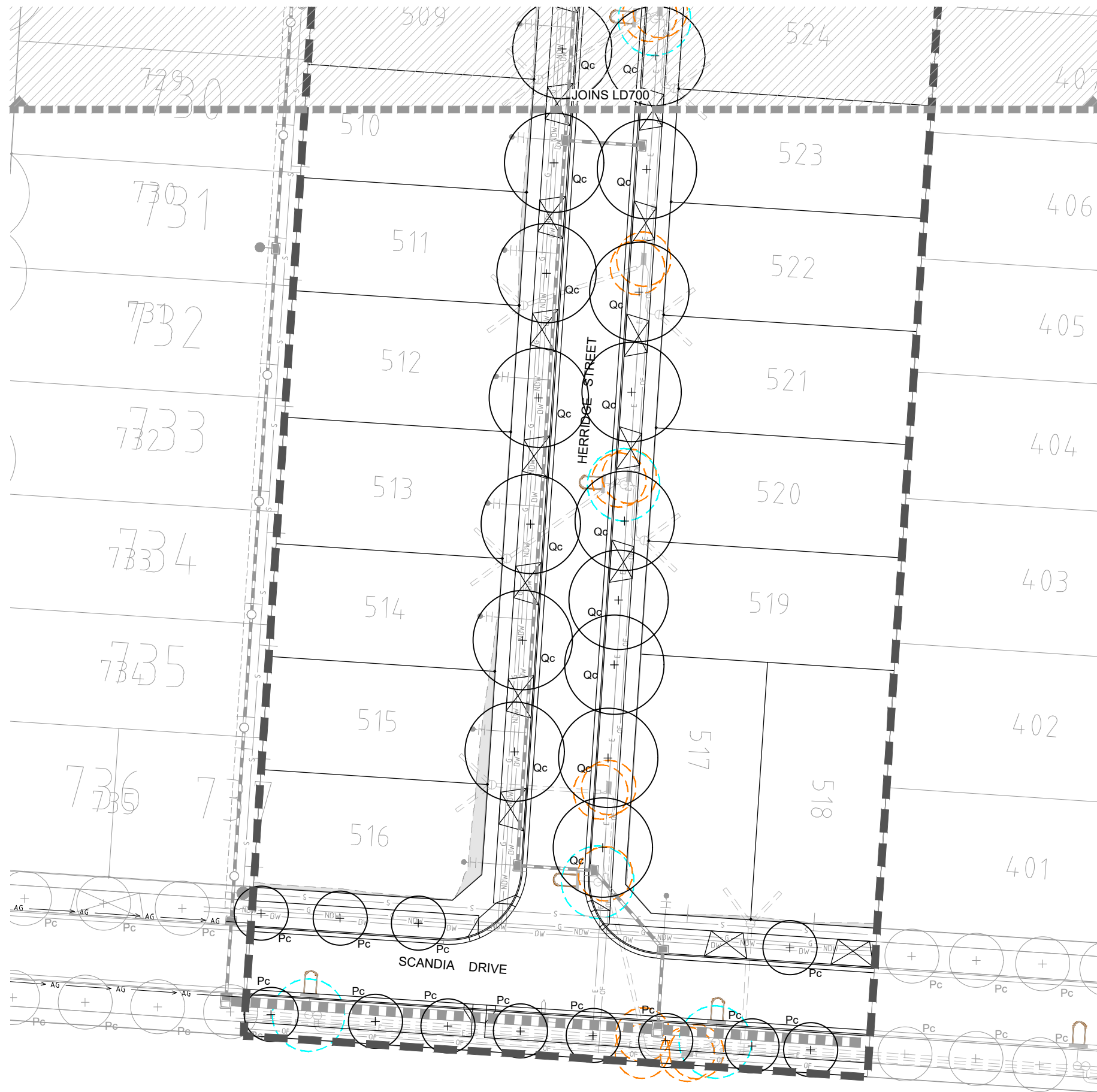
Authorised  
**M.SANGALLI**

Date  
21-09-2018

**TRIJENA**  
**STAGE 5 STREETSAPES**  
**STREETScape PLAN 1**

HUME CITY COUNCIL  
PGG (MICKLEHAM) PTY LTD

**TENDER** Drg No **304009LD700** Rev **0**



**LEGEND**

- Proposed Tree**  
As scheduled, detailed and specified
- Existing Underground Services**  
By others
- Street lights**  
By others
- 4m Electrical Offset**
- 3m Conduit End Offset**
- Extent of Works**

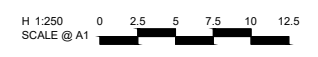
NOTE: GRASSING TO RESIDENTIAL NATURESTRIPS TO BE COMPLETED AS PART OF THE CIVIL WORKS.

PLANTING SCHEDULE						
TREES						
CODE	BOTANICAL NAME	COMMON NAME	QTY	DENSITY	INSTALL SIZE	MATURE SIZE (h x w)
Qc	<i>Quercus cerris</i>	Turkey Oak	14	as shown	min. 1.8m tall, 45L	30x15
Pc	<i>Pyrus calleryana</i> 'Chanticleer'	Ornamental Pear	12	as shown	min. 1.8m tall, 45L	12 x 6
<b>Total</b>			<b>26</b>			

NOTE: ALL TREE STOCK USED IS TO MEET AUSTRALIAN STANDARD AS2303:2015 TREE STOCK FOR LANDSCAPE USE

file name: 304009L01.dwg, layout name: LD701, plotted by: Martin Woodbine, file location: G:\304009Landscape\product\_plot\_date: 18/07/2019 2:38 PM, Sheet 3 of 4, Sheets

Rev	Amendments	Approved	Date
0	ISSUED FOR TENDER	MB	18-07-19
D	FOR COUNCIL ENDORSEMENT	MS	29-10-18
C	AMENDED IN ACCORDANCE WITH COUNCIL COMMENTS	MS	18-09-18
B	ISSUED TO COUNCIL	MS	30-07-18
A	PRELIMINARY ISSUE	MS	27-07-18



© Spiire Australia Pty Ltd All Rights Reserved  
This document is produced by Spiire Australia Pty Ltd solely for the benefit of and use by the client in accordance with the terms of the retainer. Spiire Australia Pty Ltd does not and shall not assume any responsibility or liability whatsoever to any third party arising out of any use or reliance by third party on the content of this document.



469 La Trobe Street PO Box 16084 Melbourne  
Victoria 8007 Australia T 61 3 9993 7888  
spiire.com.au ABN 55 050 029 635

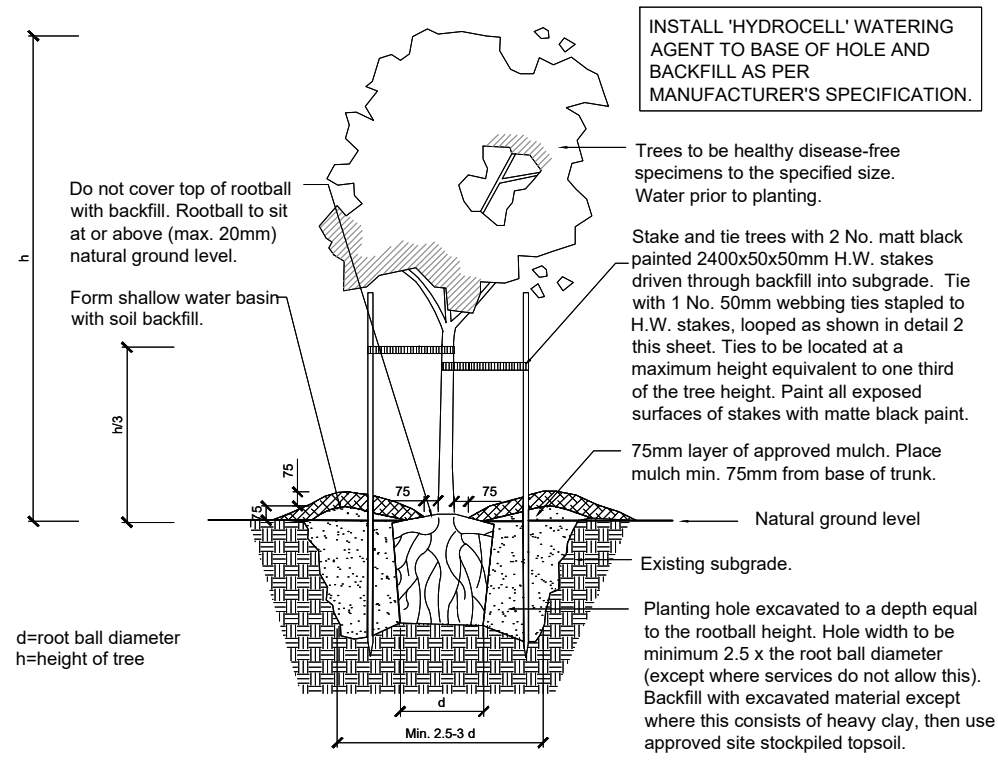
Designed  
**S.FARRELL**  
Authorised  
**M.SANGALLI**

Checked  
**M.WOODBINE**  
Date  
21-09-2018

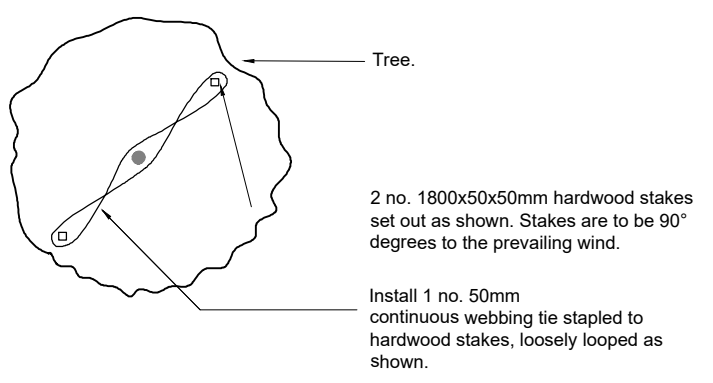
**TRIJENA**  
**STAGE 5 STREETSAPES**  
**STREETSAPES PLAN 2**

HUME CITY COUNCIL  
PGG (MICKLEHAM) PTY LTD

**TENDER** Drg No **304009LD701** Rev **0**



**1 SEMI-ADVANCED TREE PLANTING DETAIL**  
LD900 Scale 1:20000\_XREF @ A1



**2 SEMI ADVANCED TREE TIE DETAIL**  
LD900 Scale 1:20000\_XREF @ A1

file name: 304009L001.dwg, layout name: LD900, plotted by: Martin Woodbine, file location: G:\304009L\Landscapes\Products\Product Plot date 18/07/2019 2:38 PM Sheet 4 of 4 Sheets

Rev	Amendments	Approved	Date
0	ISSUED FOR TENDER	MB	18-07-19
D	FOR COUNCIL ENDORSEMENT	MS	29-10-18
C	AMENDED IN ACCORDANCE WITH COUNCIL COMMENTS	MS	18-09-18
B	ISSUED TO COUNCIL	MS	30-07-18
A	PRELIMINARY ISSUE	MS	27-07-18

AS SHOWN



© Spiire Australia Pty Ltd All Rights Reserved  
This document is produced by Spiire Australia Pty Ltd solely for the benefit of and use by the client in accordance with the terms of the retainer. Spiire Australia Pty Ltd does not and shall not assume any responsibility or liability whatsoever to any third party arising out of any use or reliance by third party on the content of this document.



469 La Trobe Street PO Box 16084 Melbourne  
Victoria 8007 Australia T 61 3 9993 7888  
spiire.com.au ABN 55 050 029 635

Designed  
S.FARRELL  
Authorised  
M.SANGALLI

Checked  
M.WOODBINE  
Date  
21-09-2018

**TRIJENA  
STAGE 5 STREETSCAPES  
LANDSCAPE DETAILS**

HUME CITY COUNCIL  
PGG (MICKLEHAM) PTY LTD

**TENDER** Drg No 304009LD900 Rev 0