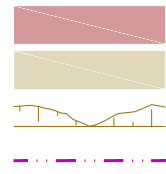


LEGEND

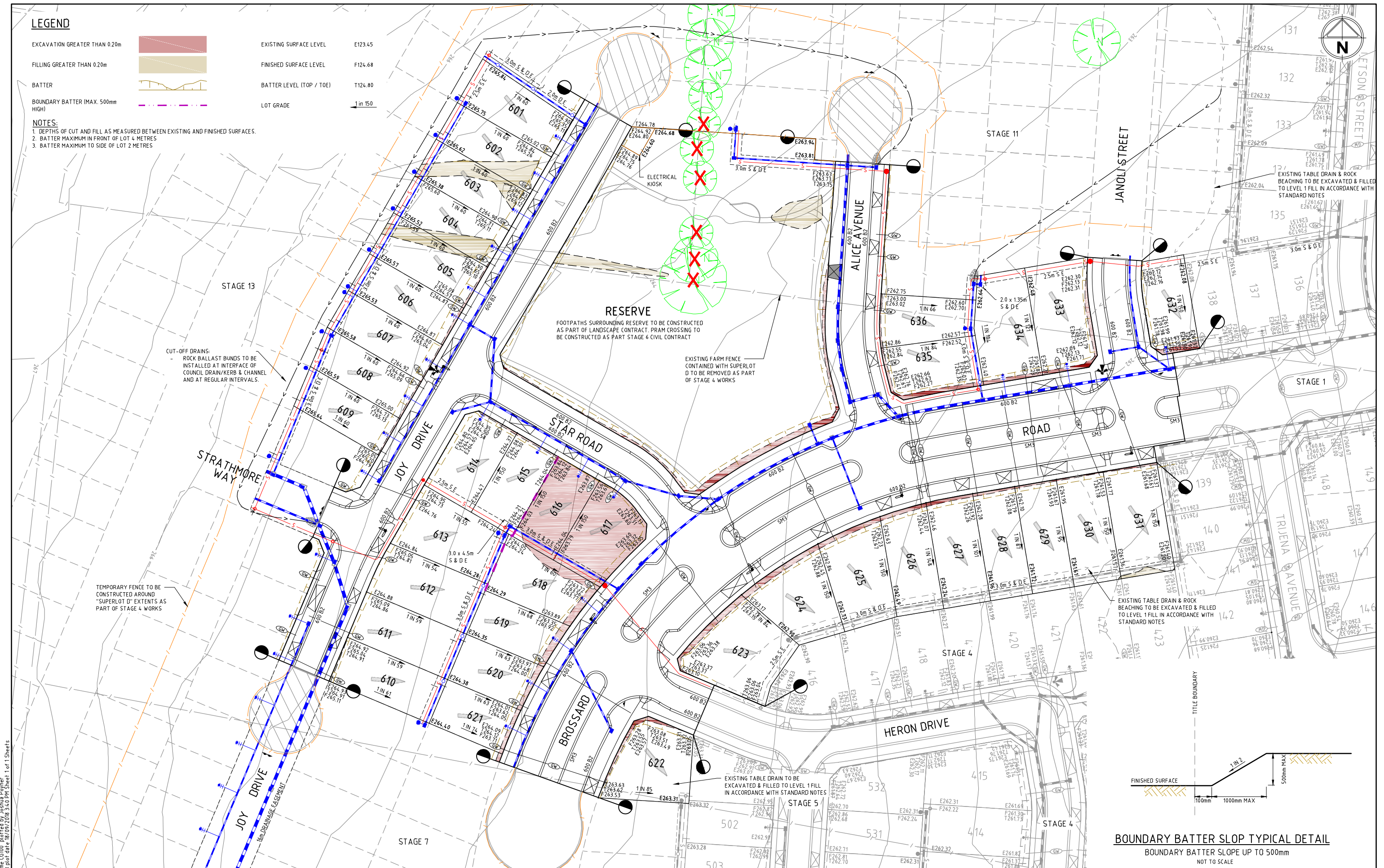
- EXCAVATION GREATER THAN 0.20m
- FILLING GREATER THAN 0.20m
- BATTER
- BOUNDARY BATTER (MAX. 500mm HIGH)



- EXISTING SURFACE LEVEL E123.45
- FINISHED SURFACE LEVEL F124.68
- BATTER LEVEL (TOP / TOE) T124.80
- LOT GRADE 1 in 150

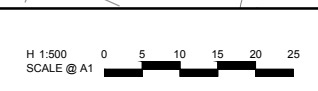
NOTES:

1. DEPTHS OF CUT AND FILL AS MEASURED BETWEEN EXISTING AND FINISHED SURFACES.
2. BATTER MAXIMUM IN FRONT OF LOT 4 METRES
3. BATTER MAXIMUM TO SIDE OF LOT 2 METRES



file name: 304010CG100.dwg layout name: CG100 plotted by: Joshua Payne
file location: G:\304010CG100\DWG\ACAD plot date: 18/09/2018 3:40 PM Sheet 1 of 1 Sheets

| Rev | Amendments | Approved | Date |
|-----|---|----------|----------|
| B | AMENDED IN ACCORDANCE WITH COUNCIL COMMENTS | M.R. | 18-09-18 |
| A | ISSUED TO CLIENT | M.R. | 31-08-18 |



© Spiire Australia Pty Ltd All Rights Reserved
This document is produced by Spiire Australia Pty Ltd solely for the benefit of and use by the client in accordance with the terms of the contract. Spiire Australia Pty Ltd does not and shall not assume any responsibility or liability whatsoever to any third party arising out of any use or reliance by third party on the content of this document.

469 La Trobe Street PO Box 16084 Melbourne
Victoria 8007 Australia T 61 3 9993 7888
spiire.com.au ABN 55 050 029 635

Designed _____ Checked _____
Authorised _____ Date _____

TRIJENA
STAGE 6
GENERAL SALES PLAN
HUME CITY COUNCIL
PGG (MICKLEHAM) PTY LTD

PRELIMINARY Drg No 304010CG100 Rev B

