

LEGEND

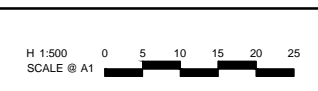
EXCAVATION GREATER THAN 0.20m		EXISTING SURFACE LEVEL	E123.45
FILLING GREATER THAN 0.20m		FINISHED SURFACE LEVEL	F124.68
BATTER		BATTER LEVEL (TOP / TOE)	T124.80
		LOT GRADE	1 in 150

NOTES:

1. DEPTHS OF CUT AND FILL AS MEASURED BETWEEN EXISTING AND FINISHED SURFACES.
2. BATTER MAXIMUM IN FRONT OF LOT 4 METRES
3. BATTER MAXIMUM TO SIDE OF LOT 2 METRES

file name: 304005CG100.dwg layout name: CG100 plotted by: Joshua Poyner
 file location: G:\304005\CG100\CAD\plot_date: 20/09/2017 6:17 PM Sheet 1 of 1 Sheets

Rev	Description	Approved	Date
E	UPDATED ROAD NAMES	M.L.	20-09-17
D	UPDATED EASEMENTS	M.L.	13-09-17
C	GENERAL REVISION	M.L.	24-08-17
B	GENERAL REVISION	M.L.	02-08-17
A	PRELIMINARY ISSUE	M.L.	18-07-17
	Amendments		



© Spiire Australia Pty Ltd All Rights Reserved
 This document is produced by Spiire Australia Pty Ltd solely for the benefit of and use by the client in accordance with the terms of the retainer. Spiire Australia Pty Ltd does not and shall not assume any responsibility or liability whatsoever to any third party arising out of any use or reliance by third party on the content of this document.



469 La Trobe Street PO Box 16084 Melbourne
 Victoria 8007 Australia T 61 3 9993 7888
 spiire.com.au ABN 55 050 029 635



Designed
M.SHIRLEY
Checked
J.POYNER
Authorised
M.LETSON
Date
18-07-17

**TRIJENA
STAGE 1
GENERAL
SALES PLAN**
 HUME CITY COUNCIL
 PGG (MICKLEHAM) PTY LTD

PRELIMINARY Drg No 304005CG100 Rev E